

Major Face-Lifting Operation Underway in Downtown Area

Community pride is hard to define but easy to see. Recent efforts by the Chelsea Businessmen's Association to restore and improve the appearance of Chelsea's Central Business District are evidence of and incentive for pride and concern for the community.

The idea of renovating the Main St. area in Chelsea originated with the Comprehensive Development Plan which appeared in June of 1969 after two years of research, analysis and planning by the Village Planning Commission, chaired by Dr. J. V. Fisher, and the Planning Consultants, Parkins, Rogers & Associates, Inc., of Detroit.

Financial assistance for the plan was provided by the Federal Government under the Urban Planning Assistance Grant Program. The long-range growth plan was designed to serve as a guide upon which village development could be based during the next 20 years.

In the "Commercial Land Use Analysis" section of the plan, the authors point out that, "the future of Chelsea's Central Business District depends upon the

quality of renovation and development which will take place in the next few years. An environmentally pleasant shopping area will encourage people living outside the village to travel to Chelsea rather than to competing shopping areas elsewhere in the region."

Suggestions made in the Comprehensive Development Plan include establishing an Historical Society and Review Board to guide the future development of the commercial area, providing adequate parking facilities behind the commercial establishments on Main St., renovation of the rear of buildings, and alleys to provide pedestrian garden walks and courtyards, and making a unified effort to create an aesthetically pleasant environment through the use of signs, street furniture and landscaping.

In the fall of 1969 the Chelsea Businessmen's Association under the direction of George Winans began organizing and discussing plans to restore and rejuvenate the Central Business District. The group sought to obtain the maximum benefits from the least possible expend-

iture. They knew if they proposed a wildly unrealistic scheme it would never be more than a dream on paper.

Seeking to maintain the 1890 vintage architecture and style of the village without having it appear old and decrepit, the merchants encouraged all local store owners to repaint and restore their places of business, by highlighting the existing architecture.

Jerry Pannone, chairman of the rejuvenation committee, had the businessmen meet with consultants from Louie's Decorating Service to co-ordinate color schemes and estimate costs. Two-tone paint jobs in soft shades which included the entire building and not just the store fronts were encouraged. Accenting cornices, shutters and natural brick work where possible were suggested to preserve the natural charm of the Main St. area.

Short range expectations are that most of the store owners in the district repaint their building for the present time, with future remodeling of things such as wooden shingle roofs to come later. Results so far have

been very encouraging. At an average cost of about \$175 per store, most merchants are making an investment in the appearance of their place of business.

A significant majority of area merchants are supporting this stage of the Chelsea rejuvenation effort. One difficulty that has arisen is the number of non-resident landlords who own buildings and do not have the enthusiasm for the project that local businessmen have.

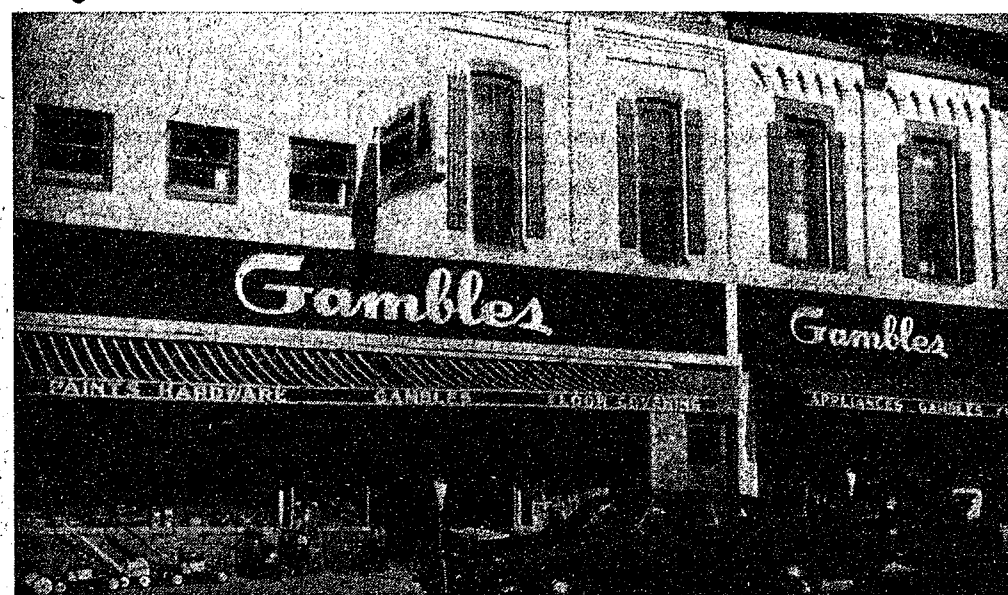
Many landlords, however, are agreeing to repaint the building they own since it is a normal, relatively inexpensive repair. Some store owners claimed that they had been meaning to repaint their buildings but just needed an incentive such as this to goad them to action.

Sain Johnson at Gambles was the first to complete his individual effort with a complete two-tone paint job and remodeling of the front and back of his store. His investment cost him about \$600 but he is glad he did it. Seeing the difference a new coat of paint made to Gambles, many other merchants decided to contribute to the general beauti-

fication effort by redecorating their own business establishments.

Included in the ever-growing list of stores which are improving or planning to improve their appearance while still retaining their 19th century charm are Kusterer's Food Market, 111 S. Main; Winans Jewelry, 108 S. Main; Village Beauty Salon, 109 N. Main; Foster's Men's Wear, 109 S. Main; Chelsea Hardware, 110 S. Main; Longworth Plating Service, 110 Jackson; Western Auto, 106 N. Main; Frigid Products, 118 N. Main; Merkel's, 209 S. Main; Hilltop Plumbing, 201 S. Main; Sam's Barber Shop, 203 S. Main; Dancer's, 112 S. Main; the 14th District Court Building, Municipal Building, and the U. S. Post Office.

Store owners expect a high rate of return on their investment as the Central Business District becomes a more pleasant place to shop. In accordance with the continuing effort of the Chelsea Businessmen's Association, The Standard plans to feature a different store or group of stores each week which have undergone redecoration.



WHERE IT ALL BEGAN. Gambles rejuvenated its appearance beginning July 6 with a green and white paint job. It was the tangible beginning of a unified voluntary effort on the part of Main St. area merchants and home owners to improve the

appearance of the village, especially the Central Business District. An attempt was made to capitalize on the 1890 architecture and enhance it rather than cover it up.

WEATHER			
	Min.	Max.	Precip.
Wednesday, July 30	71	86	0.63
Thursday, July 31	70	80	0.28
Friday, Aug. 1	70	87	0.00
Saturday, Aug. 2	76	83	0.00
Sunday, Aug. 3	60	80	0.00
Monday, Aug. 4	58	82	Trace
Tuesday, Aug. 5	49	71	0.00

The Chelsea Standard

ONE HUNDRED-FIRST YEAR—No. 7

12 Pages This Week

CHELSEA, MICHIGAN, THURSDAY, AUGUST 6, 1970

15c per copy

SUBSCRIPTION: \$4.00 PER YEAR

Chelsea Fair Opens Aug. 25 For 5 Big Days

Opening Day Set Aside as Kids Day With Reduced Fee on Carnival Rides

Chelsea Community Fair officials extend an invitation to residents of Chelsea and Chelsea areas to "come to the fair." This year the event will be held five days instead of the usual four, from Tuesday, Aug. 25 through Saturday, Aug. 29. Chelsea Fairgrounds will be the scene of contests, rides, refreshments and fun for all.

A daily schedule has been set up with the highlights to be Kids Day on Tuesday, with reduced rates on carnival rides, games, contests and a 6 p.m. children's parade. Two bicycles will be given away. Evening entertainment will feature the sounds of country and western music provided by "The Lake Valley 4."

Wednesday is the judging of livestock and exhibits with the Fat Stock Sale at 7:30 p.m.

Thursday features a Broom Polo contest at 1 p.m. The "Stockbridge Squares" will provide a square dance performance at 6:30 p.m., followed by the garden tractor pull.

Starting at 1 p.m. on Friday

and continuing into the wee hours will be the farm tractor pull. A large street parade is set for Saturday at 1 p.m., followed by a horse show at the grandstand. Evening festivities will include a talent show and the crowning of the 1970 Chelsea Fair Queen.

Fair gates open at 9 a.m. daily with admission set at 50 cents, with children 12 and under admitted free. Entry cards for the exhibitors may be picked up at Chelsea State Bank, Farmers Supply Co., or Chelsea Hardware. Completed forms are to be returned to the superintendent of the particular category being entered.

Queen Candidates Urged To Register

All queen candidates must register for the fair pageant by Monday, Aug. 17. For information regarding registration, call Glenn Weir at 375-7509. More complete details will appear in next week's issue of The Standard.

Use of Old School Site Is Clarified

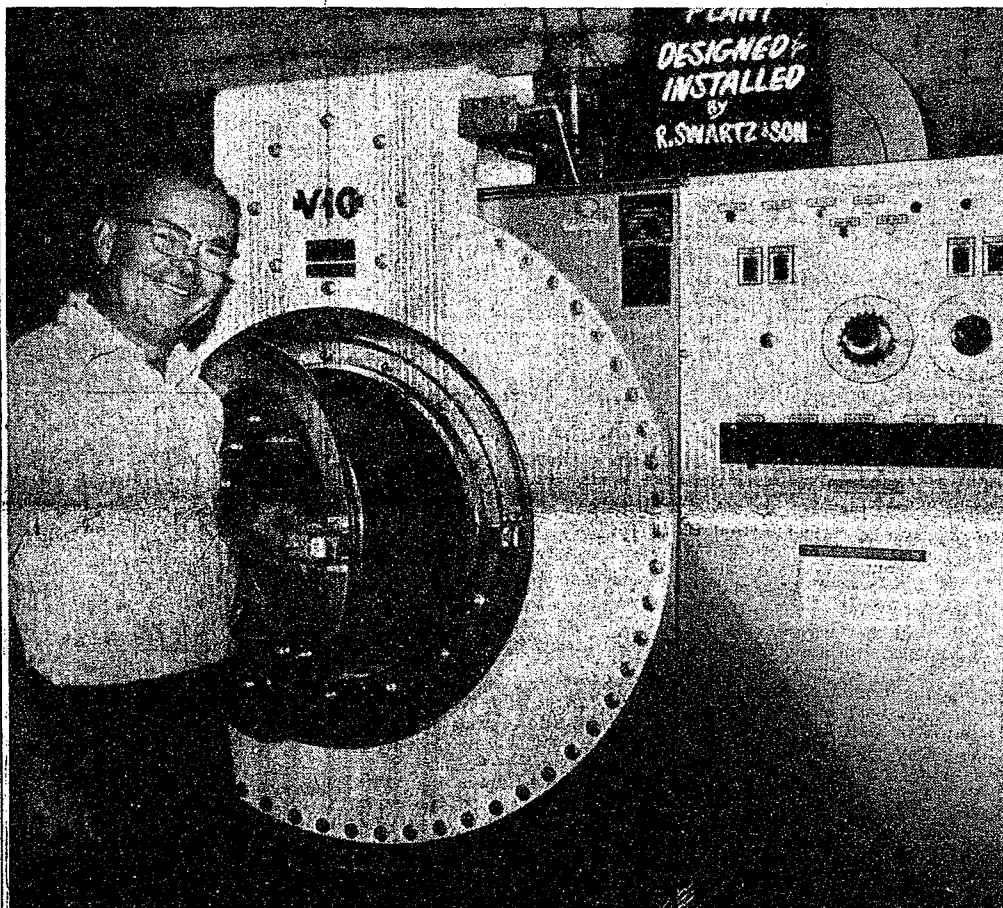
Citizens concerned about how the property that the old Junior High school was on will be put to use attended both the Monday, Aug. 3, school board meeting and the Tuesday, Aug. 4, Village Council meeting.

The group, calling themselves the Chelsea Residential Area Betterment Society, was assured that the Village Council meeting that the property could continue to be used for functions relating to education since it is not affected by the Village Zoning Ordinance.

School Board President Donald Irwin assured residents that no bus garage or gas storage tank will be put on the site of the old Junior High school. After the area is cleared of the rubble sufficient space will be provided to park school buses so they will not have to be parked on the street. Transfer of students can also be accommodated on the property, thereby eliminating the problem of students running between buses on the street.

Class of 1960 Holds Reunion

Chelsea High school class of 1960 held a reunion at Weber's in Ann Arbor, Saturday, Aug. 1. The 53 classmates and spouses who attended the reunion enjoyed swimming starting at 12 noon, and cocktails, dinner, and dancing in the evening. Dave Rowe, former class president, gave a speech at the short program, and gag gifts were awarded for various categories.



NEW CLEANING MACHINE: Chadwick Parish opens the door to his newly installed Dry-to-Dry cleaning machine made by Vic. The modern machine, which was designed and installed by R. E. Swartz and Sons of East Detroit, takes the place of the three machines formerly needed to do the job at Parish's Cleaners, 113 Park. The \$11,000 investment, plus installation cost, gives Parish the most up-to-date dry cleaning equipment in the area.

A similar machine exists in Farmington. Asked why he chose to buy the 4,600-pound machine, Parish stated that it was time for a new machine and that he had "lots of faith in the community." With the use of perchlorethylene, the machine can clean, tumble dry, extract all cleaning fluid, and distill the solvent from vapor back into liquid for 40 pounds of clothes at a time.

Primary Vote Very Light in All Townships

Area township voters chose their candidates for this fall's general election in Tuesday's primary. The turnout was generally light, as was the case across the state. Dexter, Sharon, Freedom, Lima, Sylvan, and Lyndon townships were unanimous in nominating William Milliken and Lenore Romney to represent the Republican party this fall for the respective positions of Governor and United States Senator. Sander Levin was the Democratic choice to oppose Milliken.

Incumbent Senator Philip Hart, although unopposed on the Democratic ballot received a substantial number of votes.

Bruce W. Neal will represent Democratic voters in an attempt to unseat Representative Marvin L. Esch, incumbent representative to the United States Congress from the 2nd District. For the State Senate, from the 18th District, Democrat George Sallade will oppose Gilbert Bursley, incumbent Republican, this fall. Thomas Sharpe will run for election on the Republican ticket for representative from the 51st District to the State Legislature.

In the contest for local offices, the breakdown, township by township, is as follows.

DEXTER TOWNSHIP

Dexter township voters will choose between supervisor John M. Tandy, Republican, in November, and Earl Dolezky, Democrat, for township supervisor in November. Dolezky won out over writer in candidate John Quigley by a vote of 144 to 63. For township clerk, William Eisenbeiser beat out Robert Devine in the Democratic race by a close vote of 116 to Devine's 108. Neil A. Frank was unopposed in the Republican slot. He received 165 votes. For township treasurer, Winifred C. Aberdeen (D) received 203 votes, while Mildred Hackney (R) received 182.

Arthur Dolezky, unopposed Democratic candidate, received 182 votes for Dexter township trustee, while Gary Albrecht gained 165 Republican votes. Harvey G. Fischler gathered 171 votes as the Republican candidate for constable. Dexter township voters cast 128 votes to Democratic candidate Dorothy Hunawill for District 11 County Commissioner, and 175 votes for Neil Mast, Republican.

Robert Devine, Glenn Seleska, and Bill Robertson are Dexter's Democratic delegates to the county convention. Carl Lesser, Albert Ruhlig, and Gerald Straub will represent the Republicans.

LIMA TOWNSHIP

Lima township voters cast 120 votes for Edwin Coy for township supervisor on the Republican ballot. There were no Democratic candidates. Mrs. Leila Bauer will be Lima's Republican candidate for the office of township clerk in the fall. She received 93 votes to 55 for her opponent, George P. Frisinger, II. Mrs. Hilda Pierce garnered 143 votes for township treasurer.

For the position of township trustee, incumbent Harold Gross, Democrat, received 40 votes, and incumbent Walter Wolfgang, Republican, received 108. Ralph Stof-

fer, Democrat, earned 41 votes for constable.

Lima's newly-nominated delegates to the county convention are Democrats Ann Wood (32 votes) and Wallace Wood (40), and Republicans Jay Bradbury (94 votes) and Virginia Denham (91). Jay Bradbury gained 130 votes from Lima, citizens for county commissioner from the 1st District.

SYLVAN TOWNSHIP

Sylvan township voters cast 182 votes for Bradbury for commissioner.

For Sylvan township supervisor, Maurice Hoffman, Democratic incumbent, was the only name on the ballot. He received 147 votes. Daniel J. Murphy, incumbent Democrat, won 147 votes for the position of township clerk. His opponent for the November election will be A. S. Penhalligon, Republican, who drew 188 votes.

Incumbent Sylvan Township Treasurer Fred Pearsall drew 208 votes. Barbara Dresch will be the Democratic candidate to oppose him. She gained 124 votes. Republican Reuben Lesser, incumbent trustee, had 206 votes. Lyle Christwell, Democrat, received 130. Republicans John Pierson and Howard E. Walz, incumbent township constables, received 202 and 140 votes, respectively. There were no other names on the ballot.

Sylvan township delegates to the county convention from Precinct I will be Mary Kathryn Weber, Democrat, and Leo K. LaFontaine, Republican. From Precinct II, they will be DiAnn L. Roy, Democrat, and Andrew F. Ford, and J. Raymond Steinbach, Republicans.

SHARON TOWNSHIP

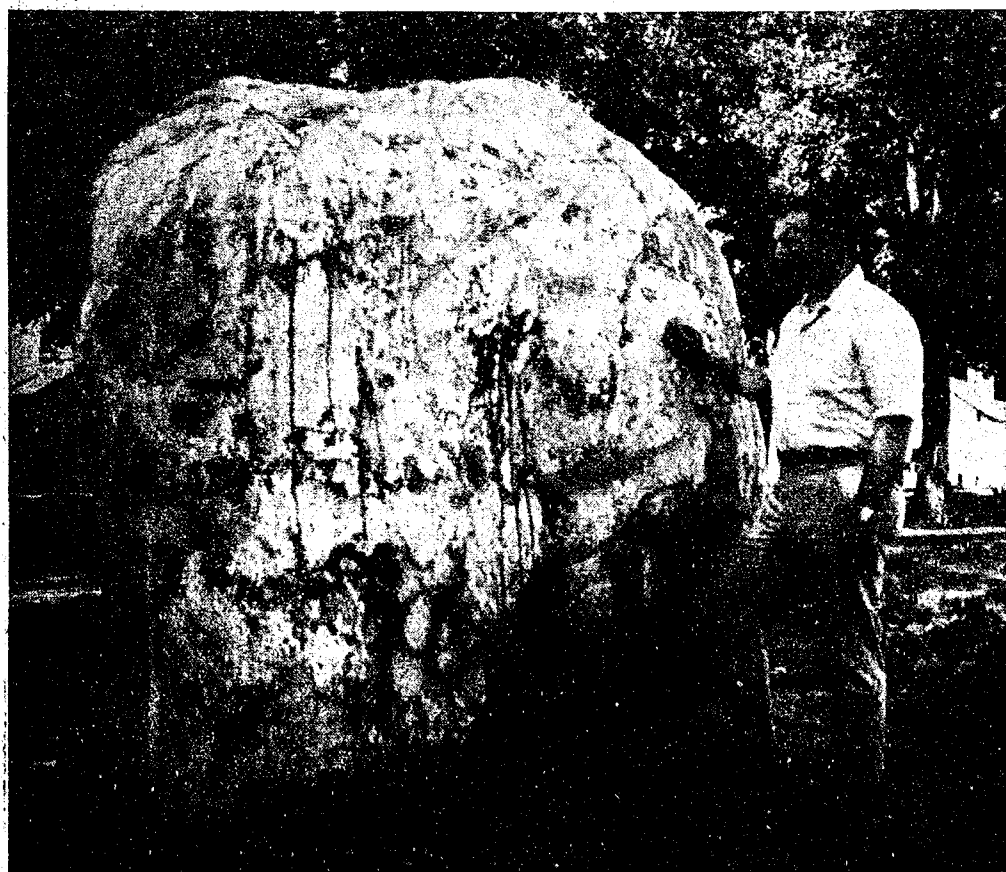
Sharon township incumbent Supervisor Russell Fuller, received 18 votes. His Republican opponent will be Allen Albert, who received 58 votes. Duane Hassel, Democrat, received 60 votes for township clerk, with one write-in vote for Victor Grossman. Incumbent Herbert Jacob received 61 votes for township treasurer to Clinton Fisk's one write-in vote. Max D. Roedel received 60 votes for township trustee. For the position of township constable, Floyd Proctor, incumbent Republican, scraped by Walter Boike to win the nomination, 55 to 47.

On the Sharon Democratic slate, there was one write-in vote for Feldkamp for the position. Jay Bradbury received 55 votes for county commissioner.

Sharon's delegates to the county convention will be Leon Ball, and Harold Drouart, Democrats; and Arlene Ross and Max Shimbary, Republicans.

FREEDOM TOWNSHIP

Freedom township election was a straight Republican contest. John C. Miller, incumbent supervisor, received 96 votes. Harold Eiseman, incumbent clerk, received 99 votes. Walter Hieber, incumbent treasurer, and incumbent township trustee Gilbert Luckhardt both received 102 votes. For the position of township constable, incumbent Luther Nagel beat out McKeever in a fairly close fight, (Continued on page three)



TAKEN FOR GRANITE? Chelsea Schools Business Manager Fred Mills examines the rock which "sprung up" around 1928 at the former site of the old junior high on East St. According to legend, landscapers attempted to dig it out so they could mow the lawn around it, but the more they dug, the more of the rock they uncovered. Dave Mohrlock was allegedly the one who unearthed it in the late '20s, and it has remained as a corner-stone since then. With the demolition of the old

junior high school, some question arose about hauling away the traditional rock of Gibraltar, but at Monday night's school board meeting, it was decided the rock remains. This decision will undoubtedly bring joy into the hearts of many local abstract artists who frequently demonstrate their creativity by slopping still another layer of paint on the craggy easel. At least 1/2 of an inch of paint layers the rock's surface, concrete evidence that a long tradition of rock painting exists in the community.

Sidewalk Days Sale Slated Next Week-end

Sidewalk Sale Days are just around the corner so save your pennies for the bargains which will line Chelsea's Main St.

Sale days will be Friday, Aug. 14 from 8:30 a.m. until 9 p.m. and Saturday, Aug. 15, from 8:30 a.m. until 6 p.m.

If any church group or other organization would like to set up a refreshment booth, which they are encouraged to do, they should contact the Chelsea Businessmen's Association through President George Winans for information.

In order to make room for incoming fall stock, the merchants traditionally offer what is left from this season's goods at greatly reduced prices. Also, many new bargain items are specially purchased for the big event. A variety of merchandise will be displayed so it pays to come if you're in the market for practically anything.

Baby Photo Contest Entries Still Accepted Through Thursday

Today is the last day to enter pictures in the Jaycee Auxiliary baby-photo contest.

The annual baby photo contest sponsored by the Chelsea Jaycee Auxiliary gets underway Monday, Aug. 10, with baby photos and canisters being put on display in Stop & Shop Supermarket. Anyone may vote for their favorite child by putting a donation in the canister with his or her picture. (Continued on page six)



H. A. Koselka To Head State Prosecutors

The new president of the Michigan Prosecuting Attorneys Association for the 1970-71 year is 36-year-old Harvey A. Koselka, a former Chelsea resident now living in Farmington. Approximately 50 related to this post after being vice-president of the association the preceding year.

Koselka has been a Lenawee County Prosecuting Attorney since Jan. 1, 1960, and served as Lenawee County Bar Association president in 1965. He is a member of the National District Attorneys Association.

He is a partner in the Adrian law firm of Koselka & Koselka. (Continued on page six)

Ambulance May Return To Chelsea

Chances are good that an ambulance will once again operate out of Chelsea or near Chelsea before too long. The Superior Ambulance Co. had stationed an ambulance in the former Chelsea Fire Hall until early spring of this year. At that time the village informed them that the hall had been marked for remodeling to house new offices for the Chelsea Police Department. Although the Village Administrator gave Superior Ambulance a June 1 deadline for vacating the hall, the ambulance was transferred in early March.

Since that time, Chelsea and the rest of the western portion of the county have been served predominantly by the ambulance stationed at Zeeb and I-94. In addition to this station, Superior ambulances operate out of Saline, Ann Arbor, and Ypsilanti.

Harry Hayden, manager of Wayne county for Superior, says that Superior is anticipating stationing an ambulance in Chelsea as soon as the company can find a place to house it. Superior might even build a place to house the ambulance, said Hayden.

Having an ambulance in close proximity would cut down on the response time to calls in the western part of the county. Response time averages eight minutes anywhere in the county, but runs higher in Chelsea and uncomfortably higher in Manchester. According to Manager Hayden, the average response time to Chelsea (Continued on page three)

Established 1871 **The Chelsea Standard** Telephone GR 5-3581

Excellence Award By Michigan Press Association
1951-1962-1963-1964-1965-1966

Walter P. Leonard, Editor and Publisher

Published every Thursday morning at 800 North Main Street, Chelsea, Mich. 48118, and second class postage paid at Chelsea, Mich., under the Act of March 3, 1879.

ADDRESS CORRECTION REQUESTED

Subscription Rates (Payable in Advance)

In Michigan:	Outside Michigan:
One Year: \$4.00	One Year: \$6.00
Six Months: \$2.25	Six Months: \$3.50
Single Copies: \$.15	Single Copies: \$.20

Service men or women, anywhere, 1 year \$4.00

MEMBER **NATIONAL NEWSPAPER ASSOCIATION - Founded 1885**

National Advertising Representative:
MICHIGAN NEWSPAPERS, INC.
257 Michigan Ave.
East Lansing, Mich. 48823

Uncle Lew from Lima Says:

DEAR MISTER EDITOR:

Have you ever seen the like of carrying on since the census folks started making their reports? Ed Doolittle allowed at the country store Saturday night that for a country worried sick over getting too many people too fast, we were crying a different tune these days.

Course, Ed went on, he can see why the head count is important to some folks, a politi-

cian for instance. If you was in office or running for office, Ed said, and you thought this county had 40,000 people and the census don't show but 35,000, that could be the margin of victory right on the winder. Ed was of the opinion politicians that lost votes in the counting will have to get on the stick and win em back amongst this new crop of voters from 18 to 21 that is ripe for the harvest in most states.

Clem Webster, that differs with Ed whenever he can see his way clear anyhow, said he was of the mind that politicians is going to find some rough going with the young folks. In the first place Clem allowed, they is more set in their political ways than us older heads. And in the second place, he went on, they don't trust politicians in the first place.

Like the fellers said the other week, Mister Editor, things is going to be interesting between now and November. With all the hot air that will blow from Washington right down into the grass roots, we ain't likely to see a break from summer heat till after the elections, was Clem's words. Speaking of too few and too many people, Ed got the ball back to the paper where he scribbled a few lines about people as he looked at the many layers of doctored and falsified statistics.

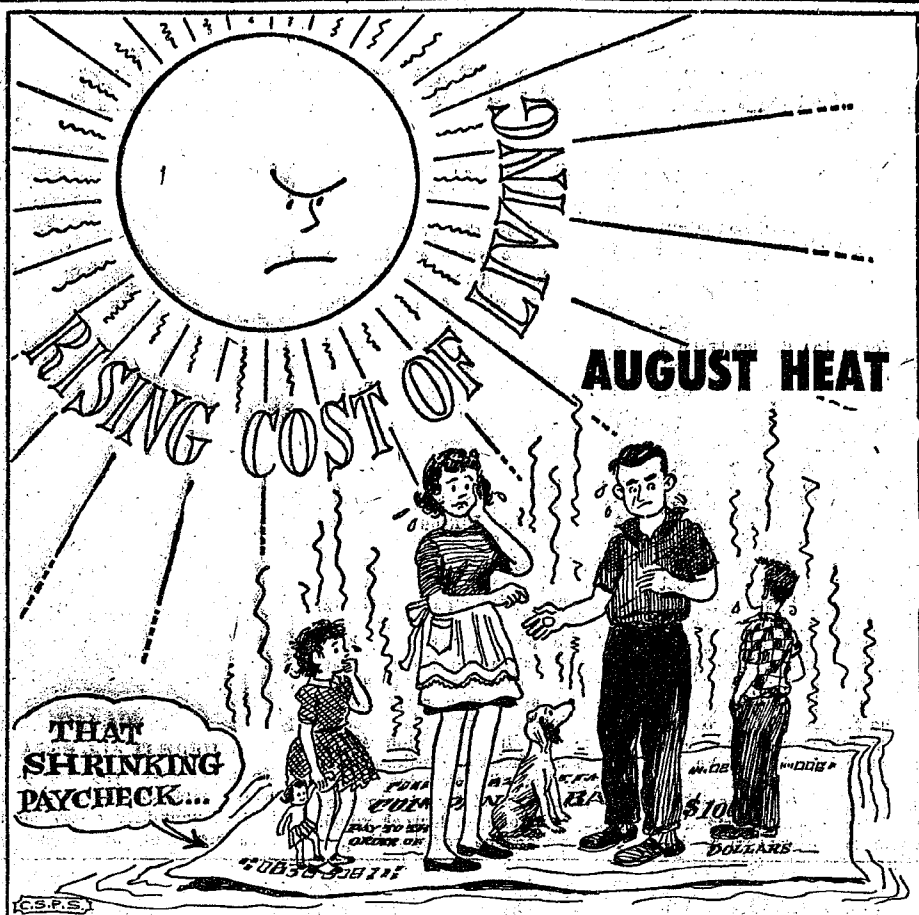
This feller at Yale University, however, most of the people who divided last bitterly over parochial aid are ready to forget the fight and move on to other issues.

"I don't believe the parochial issue will have any lasting effect on the way legislators work together," said House Speaker William D. Ryan, D-Detroit. Ryan was the leader of the parochial advocates.

"I think once everyone sees the plan in operation they will view parochial aid as just one more service to the people of Michigan," he said. "I personally think the whole thing was overplayed and people's fears will be eased when they see it in operation."

Even the defeated acknowledge the bitterness and the on and off the floor wrangling that marked the session which ended in July. But, one of the most ardent foes says, opponents hold no grudges against anyone and won't carry any over to future sessions.

"I have no animosity toward anyone and I think I can speak for others who opposed parochial aid as well," said Rep. William Jowett, R-Port Huron. "I am proud of the stand I took and still do not believe this is the best thing for the state, but I



★ MICHIGAN MIRROR ★

By Elmer E. White, Secretary, Michigan Press Association

Parochial Forgotten

The most bitterly contested issue in the Michigan legislature in recent years has been the highly emotional battle over whether to give state funds to non-public schools.

The three-year controversy climaxed this year with passage of a \$22 million allotment after the issue had divided every philosophical and political alliance in both chambers.

Strange coalitions of conservatives and liberals, Democrats and Republicans, and blacks and whites resulted with each side becoming more polarized in its position as the days progressed in the recent session.

Now that the dust has settled, however, most of the people who divided last bitterly over parochial aid are ready to forget the fight and move on to other issues.

"I don't believe the parochial issue will have any lasting effect on the way legislators work together," said House Speaker William D. Ryan, D-Detroit. Ryan was the leader of the parochial advocates.

"I think once everyone sees the plan in operation they will view parochial aid as just one more service to the people of Michigan," he said. "I personally think the whole thing was overplayed and people's fears will be eased when they see it in operation."

Even the defeated acknowledge the bitterness and the on and off the floor wrangling that marked the session which ended in July. But, one of the most ardent foes says, opponents hold no grudges against anyone and won't carry any over to future sessions.

"I have no animosity toward anyone and I think I can speak for others who opposed parochial aid as well," said Rep. William Jowett, R-Port Huron. "I am proud of the stand I took and still do not believe this is the best thing for the state, but I

will abide by the will of the majority.

"We fought a good fight, but we did not win," he said. "It's time to move on."

Ryan also said the amicable attitude means parochial will not be a factor in this year's elections, something that was borne out in the primary campaigns around the state.

"I just don't think parochial will have that much effect on the elections," he said.

He said support or non-support of the concept will not hurt legislators at the ballot box except in extremely polarized districts.

The expressions of amicability by opponents of parochial toward its backers do not mean the opponents are done fighting it, however.

The opponents did secure inclusion in the bill of a provision that the legislature seek an advisory opinion from the state Supreme Court on parochial constitutionality. The court has agreed to consider the issue.

The provision also says no funds can be dispensed to private and parochial schools until the court has ruled.

"Our last hope is with the court now," Jowett said. "It's in their hands and all we can do is wait for the ruling."

Boats Increase

Michigan has the longest freshwater coastline of any state in the country and, as one might expect, also has the largest registration of motorboats.

The U.S. Coast Guard says nearly 438,000 boats are registered in the state, according to the latest available statistics.

The Secretary of state's office says it expects that number to

be above the half million mark by the end of the current year.

State boat registrations are good for two years and cost \$5.

Figures show that aluminum boats are the most popular, with more than 160,000 of them registered.

The next most popular are plastic, which number more than 80,000.

While it was once the most popular material, wood now ranks third with 70,000 registrations.

There are 22,500 hulls made out of steel with other types making up 19,000.

More than 270,000 of those boats registered are under 15 feet in length while only eight are longer than 65 feet.

Use Low Heat For Best Results In Cooking Eggs

Your eggs been tough and leathery lately? Maybe they're not being cooked right.

Toughness of the white is probably due to high temperature cooking, says Anita Dean, foods specialist with Michigan State University. A properly cooked egg has a tender white and a smooth yolk.

If cooking temperature is too high or the egg is cooked too long, the protein shrinks and makes the white tough and the yolk mealy.

So the key to proper egg cooking, according to Mrs. Dean, is to use low to moderate heat and never overcook.

The rule of low temperature cooking also applies to any mixture with a large proportion of egg, such as omelets, souffles, custards or hollandaise sauce. Hollandaise sauce and custards will curdle if cooked at too high a temperature or for too long a time.

High temperature, too, can cause the gray or green color on the outside of the yolk of hard-cooked eggs.

MIKE'S TV ANTENNA SERVICE

Motorola Automotive

Sound Systems
Winegard Home Electronics
TV Antenna Systems

Insurance Claims

For Free Estimate, Call
Pinckney 878-3258
or 769-0130

SEAMLESS ALUMINUM GUTTERS

Also: Barn Eavestroughing

— ★ —
CALL

WILSON METAL SHOP
Phone 428-8468 Manchester, Mich.

JUST REMINISCING

Items Taken from the Files of The Chelsea Standard

4 Years Ago ...

Thursday, Aug. 11, 1966—

Pfc. Douglas K. Rowe had a happy 20th birthday this year even though he had to celebrate it while serving with the U. S. Army in Vietnam. His friends and relatives deluged him with letters and cards and packages. The mail clerk said he counted 45 pieces of mail, the greatest amount of mail delivered to any one person by him as long as he had been in the service.

Chelsea will be host to the school district's first exchange teacher, George Scrivener, of Thaxted, England. While Chelsea is greeting her visitor, Robert Benedict, fifth grade teacher at North Elementary school for the past three years, will take up teaching duties at the Thaxted County Primary School in England.

A Stuckey's Snack Bar is under construction near the Fletcher Rd. exit of I-94. The facility will contain a service station as well as snack bar facilities and living quarters for the operators.

A double-ring ceremony Saturday, Aug. 6 at St. Mary's Catholic church united Jeannene Rowe and L-Cpl. Frank White in marriage.

14 Years Ago ...

Thursday, Aug. 9, 1956—

K. R. McMannis was sworn in as a trustee on the Chelsea Village Council at Monday's meeting. McMannis was appointed to fill the vacancy caused by the recent resignation of Charles Slocum.

Announcement was made this week that Walter A. Kalmbach has retired from active service as assistant vice-president and manager of the Grass Lake branch of the National Bank of Jackson.

Ruth Ann Staphish, daughter of Mr. and Mrs. Charles Staphish, and Arden A. Musbach, son of Mr. and Mrs. Elton K. Musbach, were married at 11:30 a.m. Saturday morning in St. Thomas Catholic church, Ann Arbor. The Rev. Fr. William Foley officiated.

24 Years Ago ...

Thursday, Aug. 8, 1946—

I. Walter D. Mohrlock, president of the Village of Chelsea, do pro-

claim Aug. 14, 1946, a holiday, in conformity with the order of Governor of the State of Michigan, Harry F. Kelly, in commemoration of the first anniversary of V-J Day, and to pay honor and tribute to our local service men and women.

Donald K. Schanz, Phm.-3C, received his honorable discharge from the Navy at the U. S. Naval Separation Center at Shoemaker, Calif., on July, 1944.

Twenty-three members of the Chelsea Future Farmers organization will tour Wisconsin's dairy regions during the week of Aug. 8 to 15. The following are planning to take the trip: D. Barth, Robert Bauer, P. Bollinger, R. Erke, J. Geer, R. Kalmbach, M. Leach, G. Merkel, A. Paul, A. Grau, Dick Schultz, R. Schneider, R. Shanahan, Wm. Bauer, K. Bradbury, R. Carlson, O. Hansen, E. Lantis, D. Liebeck, Wm. Lyons, James Palmer W. Schulz, W. Czarniecki.

The Saginaw Valley Live Steam Association will meet for its 15th annual convention at the Tuscola County Fairgrounds at Caro, on Friday, Saturday and Sunday, Aug. 14, 15 and 16.

This Association is made up of men from all walks of life who are steam buffs and who wish to share their knowledge of, and love for, steam and the many uses to which it was put around the turn of the century. There will be 10 large state-inspected steam tractors in operation, as well as grain separator, saw mill, straw baler, shingle mill, veneer machine, Baker fans and other machines demonstrating the power and versatility of steam power.

For those who enjoy the workings and art of model engines there will be many of those on display, their proud builders and owners always ready to chat and compare notes and experiences. The children take great delight in the pony rides and the hay rides on the wagons pulled by the steam monsters.

This year a flea market will be an added attraction and exhibitors are welcome. The Association also invites anyone interested to bring gas or model engines and antique tractors or machinery.

A young female elephant costs about \$700, fob Africa.

The home of Mr. and Mrs. P. H. Riemenschneider in Sylvan township was the scene of the annual Riemenschneider reunion on Saturday.

Versatility is an important feature of the Morgan horse in that they may be used as children's horses, show horses, hunters, driving horses, western horses and even trotters.

Live Steam Association Plans Show

Whoooo-eeee! There goes the steam whistle and it's time once again for the grain-threshing—and the log-sawing—and the flour and cornmeal-grinding, and all the rumble, roar and excitement of the old days of steam!!!

The Saginaw Valley Live Steam Association will meet for its 15th annual convention at the Tuscola County Fairgrounds at Caro, on Friday, Saturday and Sunday, Aug. 14, 15 and 16.

This Association is made up of men from all walks of life who are steam buffs and who wish to share their knowledge of, and love for, steam and the many uses to which it was put around the turn of the century. There will be 10 large state-inspected steam tractors in operation, as well as grain separator, saw mill, straw baler, shingle mill, veneer machine, Baker fans and other machines demonstrating the power and versatility of steam power.

For those who enjoy the workings and art of model engines there will be many of those on display, their proud builders and owners always ready to chat and compare notes and experiences. The children take great delight in the pony rides and the hay rides on the wagons pulled by the steam monsters.

This year a flea market will be an added attraction and exhibitors are welcome. The Association also invites anyone interested to bring gas or model engines and antique tractors or machinery.

A young female elephant costs about \$700, fob Africa.

The home of Mr. and Mrs. P. H. Riemenschneider in Sylvan township was the scene of the annual Riemenschneider reunion on Saturday.

Versatility is an important feature of the Morgan horse in that they may be used as children's horses, show horses, hunters, driving horses, western horses and even trotters.

MONEY TROUBLE?
ONE PLACE TO PAY!
Credit Management Service
662-2565
215 South Fifth Ave.
Ann Arbor
State Licensed and Bonded

A CAREER FOR YOU ... AT

WASHTENAW COMMUNITY COLLEGE

- | | |
|---|--|
| <input type="checkbox"/> Agri-Business | <input type="checkbox"/> Food Service Technology |
| <input type="checkbox"/> Business & Industrial Management | <input type="checkbox"/> Library Technology |
| <input type="checkbox"/> Data Processing | <input type="checkbox"/> Medical Office Specialist Program |
| <input type="checkbox"/> X-ray Technology | <input type="checkbox"/> Technical-Commercial Art |
| <input type="checkbox"/> Dental Assisting | <input type="checkbox"/> Auto Body Repair |
| <input type="checkbox"/> Inhalation Therapy | <input type="checkbox"/> Automotive Technology |
| <input type="checkbox"/> Architectural Drafting | <input type="checkbox"/> Industrial Drafting |
| <input type="checkbox"/> Electronics-Engineering Technology | <input type="checkbox"/> Electro-Mechanical Technology |
| <input type="checkbox"/> Numerical Control Technology | <input type="checkbox"/> Fluid Power Technology |
| <input type="checkbox"/> Metallurgical Technology | <input type="checkbox"/> Mechanical-Engineering Technology |
| <input type="checkbox"/> Educational Assisting | <input type="checkbox"/> Toolroom Machine Operation |
| <input type="checkbox"/> General Education | <input type="checkbox"/> Welding & Fabricating |

PRE-REGISTRATION FOR FALL 1970 NOW IN PROGRESS

Note: New student applications have increased over previous years. You can guarantee your place in classes by pre-registering NOW.

For Further Information — Contact

WASHTENAW COMMUNITY COLLEGE

CALL: 483-5152, Extensions 78-79

or

Mail this ad, after checking the appropriate box. Please include your name and address.

To: Washtenaw Community College
P. O. Box 345, Dept. X
Ann Arbor, Michigan 48107

Name _____
Address _____

GET A HONEY OF A DEAL

Seven magnificent Ski-Doo series with twenty-seven exciting new models for 1971 make this the year you have the sweetest choice ever. And now is the time for the sweetest deal ever. Selection, prices and trade-in allowances have never been better. Make a baseline for your Ski-Doo dealer's and see for yourself. Now, before the winter rush.

ski-doo
the nineteen-seventy-one

The sign of the finest snowmobiles, sportswear, accessories, parts and service. Ski-Doo.

*T.M. Bombardier Ltd.

Summer Sales -- Buy NOW & SAVE!
(For Immediate Delivery)

Gateway SPORTS CENTRE, Inc.
"Your Sports Equipment Centre"

Phone 475-8676

1603 S. Main, Chelsea

College education costs have increased from eight to 25 percent over a year ago.

The Navy's new atomic-powered aircraft carrier, Eisenhower, will cost about \$510-million.

WEIGHT WATCHERS

We have 1-cal. sugar-free

FAYGO ROOT BEER,
CHERRY & RED POP

6 for 79¢

THIS WEEK'S SPECIAL

6-OZ. JAR MAXWELL HOUSE

INSTANT COFFEE . . 99¢

OPEN 6 A.M. TILL 11 P.M.

**GALLUP - SILKWORTH
PUMP & PANTRY**

295 S. Main St.

Chelsea

MILK

THE
PROTEIN
SNACK

Bring on the Milk!
It's snack time!

The call goes out for milk and more milk when the youngsters take time out for an energy-building snack. Be ready!



Milk is Nature's wonder-food. Drink it daily!

WEINBERG DAIRY

QUALITY PASTEURIZED DAIRY PRODUCTS

Old US-12

Phone GR 5-5771

Primary...

(Continued from page one)

82-68. Freedom voters cast 95 votes for Jay Bradbury for county commissioner. Delegates to the county convention will be Frank Carsons, Democrat, and Republicans Austin G. Barber, Thomas Roberts, and Elvira Vogel.

LYNDON TOWNSHIP

Lyndon township cast 50 votes to Jay Bradbury for county commissioner. Republican George Bauer, Jr., incumbent, received 60 votes for supervisor. He was unopposed. Doris Fuhrmann, incumbent township clerk, received the endorsement of the Democratic party with 44 votes. For the position of treasurer, the fall will see a closely fought election between Theresa Bott, Democrat, who gained 44 votes, and Nancy White, Republican, whose 47 votes earned her the nomination over Virginia Meyers with 28 votes. Republican Norman Kaiser received 56 votes to win the nomination for trustee. Once again the contestable election promises to be exciting. Of three Republican candidates on the ballot, E. Jay Hopkins led the voting, with 51 votes. Donald Beaman was close with 49 votes. These two men will both be on the election ticket in November—only one will be elected. Robert Meyers, also on Tuesday's ballot, received 20 votes. Lyndon's candidates to the county convention are Republicans Wilma Kaiser, and Delbert White.

Byron Smiths Enjoy Vacation Trip in Alaska

Mr. and Mrs. Byron Smith, 2690 McKinley Rd., have just returned from a two-week visit to Anchorage, Alaska.

They were guests of the John Strong family there. While in Anchorage, the Smiths took two week-end camping trips. The first took them to the Kenai Peninsula and on the second they went to the Talkeetna Mountains where they explored the old Independence gold mines, which have been out of operation since 1930.

They also enjoyed salmon fishing on their week-end expeditions. This was the Smiths' first visit to Alaska and they were very impressed. Eventually, they hope to return for a second visit.

Detroit Edison's new Monroe Power Plant, now under construction in Monroe, will be the world's largest steam plant when it is completed in 1973. It will have a capacity of 3,200,000 kilowatts.

Hudson Bay covers about 450,000 square miles.



EMPLOYEE STOCK PURCHASE PLAN: J. L. Hess, plant manager of Dana Chelsea Plant, presented to Elizabeth Oesterle (left), and William Pyper (right), the first stock certificates received by Chelsea employees participating in Dana's newly initiated stock purchase plan which is offered to all its employees. 30% of all employees in the Dana Corporation participate in the program. William

Pyper works as a maintenance man and will retire next year with 30 years of service. Bill is the oldest seniority employee participating in Dana stock purchase plan. He and his wife, Vira, just celebrated their 22nd wedding anniversary July 25. Elizabeth Oesterle has been with the Chelsea Plant since April of 1948. Liz has been a life-long resident of Chelsea.

Auto Dealers Given Preview Of '71 Models

The 1971 cars are coming and a few Chelsea citizens have seen them already! Mr. and Mrs. George A. Staffan, 632 Flanders, were present Tuesday, Aug. 4 at the Detroit region 1971 Chrysler-Plymouth preview of new cars held at the Raleigh House in Detroit.

Staffan, representing G. A. Sales & Service, was one of 200 area dealers invited to the luncheon and business meeting. New product features, advertising and marketing plans for the coming year were discussed.

Las Vegas was the setting for the 1971 Oldsmobile preview. Mr. and Mrs. Graham Sprague, 1470 Cavanaugh Lake, of Sprague Buick-Olds-Opel, Inc., attended a four-day conference of Oldsmobile dealers in sunny Las Vegas, July 29 to Aug. 1. As guests of Oldsmobile, they attended a nightclub dinner party, hosted by the television celebrity Don Rickles. The Spragues enjoyed their stay and recommend Las Vegas as a good place to visit. When asked about the 1971 cars, "They're beautiful, but they won't be here until Oct. 1."

JCs Entertain State Officers At Tuesday Evening Steak Fry

Approximately 75 Jaycees and guests attended the Chelsea Jaycee annual Steak Fry held at the Dick Ringe home at Island Lake, Tuesday night, Aug. 4. The evening began with horseshoe pitching and a baseball game to work up the men's appetites for the grill-it-yourself steak fry.

After a short business meeting, past Jaycee president Walt Brown presented the Chelsea Jaycee Award of Honor to Walter Leonard, editor and publisher of The Chelsea Standard, for the co-operation and support he has given to the Jaycees over the years.

Leonard was made an honorary Jaycee in 1968, but in the past year his complete coverage of various Jaycee projects enabled the local chapter to win the State Community Relations Award and to place second in national competition.

Jaycee Award of the month was presented to Mitchell Zink for his fine job on the auction rummage sale. Many honored guests were on hand to enjoy the event including State Sen. Gilbert Bursley. In attendance at the event were Jaycee State President Don DeMoss, State Internal Vice-President Lloyd Wis-

mer, Region J. State National Director Chuck Dean, District 29 Vice-President Dick Smith, and various area Jaycee officers and members. Also present were Joe Doering and Jim Gaken who traditionally do the cooking at the Jaycee Barbecue.

Recreation Program

Final Session Is Today

Holly Powers announces that today, Aug. 6, is the last day for the organized children's games, part of the summer recreation program which ends in its entirety today.



Ambulance May Be Returned to Chelsea...

(Continued from page one)

giving the best possible ambulance service by keeping response time down to a minimum, reports Hayden. If present plans materialize, Chelsea and vicinity should be in county, they are concentrating on for improved ambulance service.

THE

FINAL SUMMER CLEARANCE SALE

Is Still On at Dancer's

BIG 50% OFF

on

Ladies' Summer Shoes

1 LOT OF MEN'S

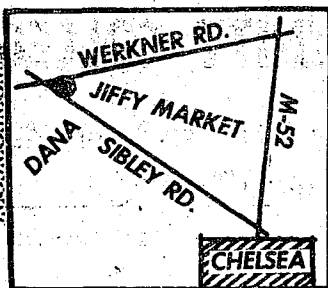
SLAX and JEANS

1/3 OFF

Many Other Summer Items
at 1/3 to 1/2 Off

DANCER'S
Chelsea's Friendly Dept. Store

SIDEWALK DAYS
Fri. & Sat., Aug. 14-15



HOURS:

7 AM - 10 PM

OPEN 7 DAYS A WEEK!

PHONE 475-5701

Jiffy market

COMPLETE
SUPER
MARKET

BIG ENOUGH TO

SERVE YOU.....SMALL ENOUGH TO KNOW YOU!

Corner of SIBLEY & WERKNER RDS....CHELSEA, MICHIGAN

U.S.D.A. CHOICE

SIRLOIN STEAK \$1²⁹ lb.

GORDON'S

Pure PORK SAUSAGE 1-Lb. Roll 49¢

Sausage and Eggs??

U. S. GRADE A MEDIUM

WHITE EGGS . doz. 43¢

**FREE TOTE BAG
SUNSHINE POTATO CHIPS**

By KRUNCHEE

12 1/2-Oz. Bags 59¢ 10¢ below regular price. Packed in Tote Bag.

CALIFORNIA
UNION PACKED

SOUTH CAROLINA

SEEDLESS
GRAPES 35¢ lb.

BLAKE
PEACHES 15¢ lb.

Here's An Old-Time Favourite

Baked By Holsum

Way Baking Co. of Jackson

KLEEN-MAID BREAD

Brought to you this week

at a special price

to let you try this quality bread.

1 1/4-Lb.
Loaf

19¢

DOUMAK

FIRESIDE

MARSHMALLOWS... 1-Lb. Pkg. 23¢

Large, Red Ripe, Sweet

WATERMELONS 88¢

Camelot Draft Style

ROOT BEER 3 1/2-Gal. Bottles \$1

BREAST O' CHICKEN
LIGHT CHUNK

TUNA 3 6 1/2-Oz. Cans \$1

WHY PAY MORE??

ICE CUBES . Guaranteed 8-Lb. Bag 49¢

Ads
Taken
till 5 p.m.
Tuesday

IT'S EASY TO
BUY-SELL-RENT-
HIRE & FIND WITH

WANT ADS

Just
Call
GR 5-3581

WANT ADS

**The
Chelsea Standard**

WANT AD RATES

PAID IN ADVANCE—All regular advertisements, 10 cents for 25 words or less, each insertion. Count each line as a word. For more than 25 words add 2 cents per word for each insertion. "Blind" ads or box number ads, 50c extra per insertion.

CHARGE RATES—Same as cash in advance, with 15 cents bookkeeping charge if not paid before 6 p.m. Tuesday preceding publication. Pay in advance, send cash or stamps and save 15 cents.

DISPLAY WANT ADS—Rate, \$1.10 per column inch, single column width, only 8-point and 14-point light type.

CARDS OF THANKS or MEMORIALS—Single paragraph style, \$1.00 per insertion for 50 words or less; 2 cents per word beyond 50 words. Minimum, 1 inch.

COPY DEADLINE—5 p.m. Tuesday week of publication.

CAR RENTAL by the day, week-end, week or month. Full insurance coverage, low rates. Call Lyle Christwell at Palmer Motor Sales, GR 5-3271.

FOR SALE—Mercury Mark V 15 h.p. racing motor with controls. Excellent condition. \$175. Call 426-8686 or 663-8228.

**WORK SHOE
HEADQUARTERS**

Famous Red Wing Brand
\$12.95 to \$26.95

Foster's Men's Wear

USED TRACTOR TIRES—Large inventory on hand. Also used passenger truck, grader tires. Jackson Tire Bldg., M-106, Mt. Pleasant, Mich. Ph. 596-2925.

IN CHELSEA

NEW 3-BEDROOM 1 1/2 bath home with 2-car garage and walk-out basement under construction soon.

Ready to move in. \$28,900. Outstanding country lot.

**W. C. Weber
Construction Co.**

Franchised dealer of
W. G. Best Homes
475-2828 or 475-8904

Ice Cream Social
Spaulding for Children Auxiliary
Sunday, Aug. 9

Rain Date: Sunday, Aug. 16
Serving from 3 p.m. to 8 p.m.
at Spaulding Farm
3600 Waltrous Rd.
Menu: Potato salad, baked beans, barbecues, hot dogs, cake and ice cream, hot and cold drinks.
Some antiques for sale.

**ALLSTATE
INSURANCE**

AUTO - BOAT - COMMERCIAL
LIFE - HEALTH - HOME
LIABILITY
Phone Eves. or Week-ends for
N. H. MILES, Agent
GR 5-8334

FOR SALE—Registered St. Bernard puppies with no papers for \$50 each. Phone (517) 851-8962, Stockbridge.

ALUMINUM SIDING, custom trim and gutters. Dave's Siding Co. Ph. Gregory 498-2423.

FOR SALE—Arrow back maple deacon bench, \$85; maple dining room furniture top table and 4 captain's chairs, \$175; following all maple: Sprague & Carleton hutch, cabinet, \$175; end table, \$30; coffee table, \$25. Phone 475-7362.

WANT ADS

BOARDING, trimming, training. Town and Country Kennels, Jackson Rd. at Baker. NO 3-7200.

MOR HEATING & Cooling Co.—Air conditioning, hot water, steam boilers, warm air furnaces. Sales and service. Ph. 498-2853, Gregory.

**Gem Travel Trailers
and Campers**

PICK UP COVERS
4' ————— \$100.00
26' ————— \$179.00 and up

Triangle Sales
Chelsea 475-4302

**FARMS
RESIDENTIAL
LAKE PROPERTY**

for
QUALIFIED RELIABLE SALES
PERSONNEL
CONTACT

Carole Bell, 428-8892
Kathryn Smith, 426-5830
Janice Fouth, Saline, 429-4114
Wendel Fouth, Saline, 429-4114

YPSILANTI OFFICE
Arthur Kane, 482-6655
Virginia Oakes, 482-6655

Evinger Real Estate
426-8286
Dexter, Mich.

**FURNITURE
SALE**

Prices Reduced
10% to 50%

MERKEL BROS.
Ph. Chelsea 475-8621

CHEAP CARS

'63 Fairlane 500 ————— \$95
'63 Ford 2-door ————— \$150
'63 Ford 2-door ————— \$195
'64 Mercury Hardtop ————— \$295
'63 Ford 2-door ————— \$395

All Run Good
Ready to Go.

PALMER FORD
Open Mon., Wed. & Thur.
Til 9:00
Chelsea GR 5-3271

BIG YARD SALE—Friday, Aug. 7 and Saturday, Aug. 8, 9 a.m. to 7 p.m. 2 antique wash stands (commodies), 21" TV, radio-stereo record player, Collier's Encyclopedia, dishes, lots and lots of miscellaneous items. 527 W. Middle.

LOSE WEIGHT safely with Dex-A-Diet, and remove excess fluid with FLUIDEX. Only 98c and \$1.69 at Chelsea Drug.

EXPERIENCED PAINTER looking for part-time work. Interior or exterior. Very reasonable, free estimates. 475-7678.

Country Home
Excellent condition for family or mature adults to share.

2 bedrooms (master one 18 foot), and ceramic bath up, 1 bedroom and ceramic half bath down. Full tiled basement. Paved road near lake and I-94. 2-car garage. \$285 per month.

Phone 475-2683
or Detroit 831-1906

WANT ADS

Contractor Servicing
Chelsea, Dexter and
Manchester Areas

Complete Home Remodeling
Inside and Outside

Specializing in extra living space, recreation rooms, kitchens and paneling. Installing all aluminum products, 6" eaves troughs, custom-made awnings, windows and doors, aluminum siding in many selected colors and styles.

Please Call
DALE COOK
Chelsea 475-8863

ROBERT PATRICK for home improvement, building and maintenance. Ph. 475-7460.

FOR SALE—15 h.p. Evinrude outboard motor. \$75. Call after 6:30. Phone 475-2832.

HAMMOND ORGAN teachers wanted to teach in their own homes. Call Grinnell Brothers, Ann Arbor. 662-5667.

WANTED TO RENT or Lease — Bob Smith's Horseshoeing — Farm home with room for horses. 429-4835.

HELP WANTED—Farm labor, truck garden. Hector Devulder & Sons 6771 Peckins Rd. Phone 475-2915.

YARD SALE—Playpens, baby clothes, cowboy boots, rubber boots, clothes and misc. 122 Orchard St. Thursday, Aug. 6 from 9 a.m. to 5 p.m.

FOR SALE—Beauty shop hair dryer, hydraulic chair, dryer without chair. Call (517) 596-2751.

WANTED—Small apartment for married woman whose husband is in Vietnam. Ph. before 2 p.m., 475-8247.

IS YOUR INCOME limited on your present position? Is your promotion frozen? Nation-wide company expanding in Michigan. Call 456-7376 or 456-4363.

LOSE WEIGHT safely with Dex-A-Diet and remove excess fluids with FLUIDEX. Only 98c and \$1.69 at Chelsea Drug.

WANTED TO RENT—Furnished apartment or house for single male teacher. Call Lake Orion (813) 391-1332 after Aug. 11 or contact Chelsea High School.

HELP WANTED, Male or Female, full and part-time cooks. Apply at Paul Bunyan Restaurant, 5510 Jackson Rd., Ann Arbor.

FOR RENT—Nearly new 3-bedroom year-around Lake-front cottage. Walkout tiled basement, garage, sugar loaf lake, 1/2 block from Waterloo Rd. \$150 per month. Ph. 479-7034.

PEACHES NOW—Red Haven Monday. Sam Aluto Orchard. Turn east off M-52 on Allen Rd. Phone Clinton 456-4510.

**LaFontaine
Construction Co.**

GENERAL CONTRACTORS
COMPLETE BUILDING SERVICE

Residential — Commercial
Emergency Repair Service

FREE ESTIMATES
Phone 475-7494
P. O. Box 160, Chelsea, Mich.

Sidewalk Specials

Merkel's will have rug samples, odds and ends of carpeting, close-out linoleum, discontinued colors of flat wall and satin finish enamel, gifts and many other items at give away prices.

FRIDAY and SATURDAY
AUG. 14th and 15th
on Sidewalk Sale

Merkel Bros.

Black Dirt - Top Soil
Gravel, etc.

Building, septic tanks and drain field repairs.

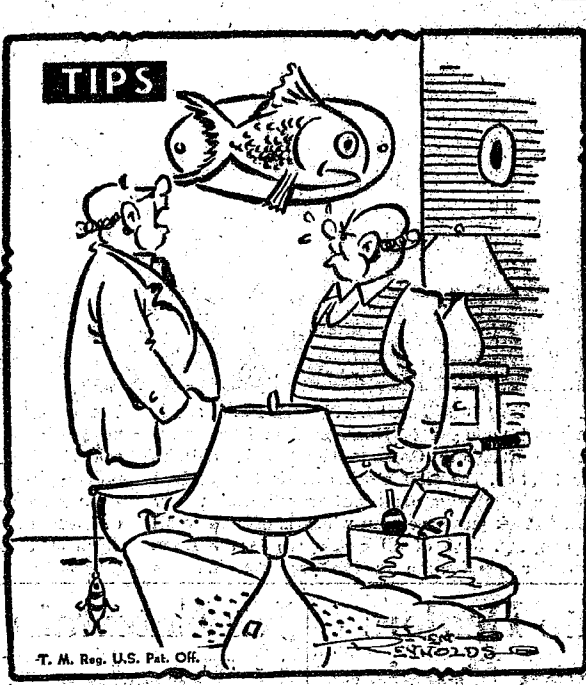
FREE ESTIMATES
Ray St. Charles
TRUCKING

Phone 663-0093 or 449-4179

**D. EDWARDS
& SON**
Home Maintenance
Service

Vinyl or Aluminum
SIDING - WINDOWS
DOORS
Roofing - Roof Repair
— ALSO —
Building Maintenance
and Supplies

Phone Chelsea 479-4231
or Napoleon 536-4843



WANT ADS

UNITED METHODIST Church of North Lake is having a back-to-school dessert style show on Aug. 12 at 12:30 p.m. at Inverness Country Club. Fashions furnished by Dancer's. Admission, \$1 per person. Door prizes. Purchase tickets at door.

REAL ESTATE

FOR SALE

BUILDING LOT — One mile east on Old US-12. 135 feet of frontage. 1 1/4 acres. \$4000.

10 ACRES LOTS—Several to choose from. 2 1/2 miles out. From \$7,500.

SPOTLESS—2 bedrooms, separate dining room, 1 1/2-car garage. Aluminum siding. Ideal for a couple. \$22,000.

BRICK COLONIAL—A home with everything. 4 bedrooms, central air conditioning, sauna, large screened porch, scenic view, etc. Washington St. address.

INVEST FOR THE FUTURE—7 1/2 acres. Has village water, electric and gas. 745 ft. of R.R. frontage. 3-bedroom house to provide current income. \$30,000 with terms.

CLARENCE WOOD

BROKER
646 Flanders St.
Phone 475-8217 or 479-4603.

FOR SALE

CROOKED LAKE year around lake cottage, oil furnace, large lot, good beach. \$21,000.

8 1/2-ACRE building lot with trout stream. \$9,500.

48 ACRES level land, \$500 per acre, excellent terms.

25 LEVEL ACRES. Ideal for homes.

NO RENTALS

**R. D. Miller
REAL ESTATE**

Real Estate Broker
GR 5-5892

H. W. Buss
phone 475-8910
15775 Cavanaugh Lake Rd.
Chelsea, Mich.
Post Office Box 381

List your property with Miller—fast, efficient service.

For Sale By Owner
Ranch Type
3-Bedroom Home

All-carpeted with exception of tile kitchen and bath. Corner fenced lot with 1-car garage.

Robert Smith
501 Wellington, Chelsea
Phone 475-7184



JIM'S PURE SERVICE

Tires — Batteries — Tune-Ups — Brake Service — Wheel Alignment
PHONE 475-2822

WANT ADS

ATTENTION: Morarity erects buildings all winter if you are in need of a commercial or agricultural building order before winter and want to save money. Quality materials and workmanship guaranteed. Call Petersburg 279-1855 collect or write to Box 84, Petersburg, Mich., for all your pole building needs see Morarity Pole Builders today.

**Eibler, Frisinger
& St. Amour**

3-BEDROOM Ranch Home in the Village of Chelsea. Very nice fenced in back yard. Excellent decoration. Priced to sell at \$22,900.

CAVANAUGH LAKE—Modern 2-bedroom year-round home, large lot, fireplace, beautiful view. Priced to sell at \$19,900.

SUGAR LOAF LAKE—Fireplace, 2-bedroom, very nice decorating, year-round utility room. Priced to sell, \$15,900.

CAVANAUGH LAKE — Beautiful 3-bedroom home located on the water, 120-foot frontage. Excellent decoration. Only 20 minutes from Ann Arbor.

110-ACRE FARM—Excellent buildings. Four-bedroom farm home, study and dining room. 2 mi. south of Chelsea. Prime location.

3-BEDROOM RANCH—Large lot, 3-car garage, fireplace, excellent decoration. Located just outside Chelsea village limits.

Many Building Sites and Farms to choose from.

**Eibler, Frisinger
& St. Amour**

REALTORS
Chelsea—475-8681
Dexter—426-4659

Evenings Call:
Paul Frisinger, 475-2621
Bob Thornton, 475-8857
Herman Koehn, 475-2613
Burke Fitzgerald, 878-6603
George Frisinger, 479-4161

House For Sale
With lake rights on Sweezy Lake near Norvell. Completely furnished, 2-bedrooms, fireplace and living room, 10x20 screen porch, 271x132 ft. lot. Immediate possession. \$8,500.

Willis Real Estate
(517) 522-8121

REAL ESTATE
FOR SALE

55 ACRES — Approved for subdivision.

Listings Needed
Kern Real Estate
616 S. Main St., Chelsea
Phone 475-8663.

For Sale By Owner
Ranch Type
3-Bedroom Home

All-carpeted with exception of tile kitchen and bath. Corner fenced lot with 1-car garage.

Robert Smith
501 Wellington, Chelsea
Phone 475-7184

We never get our
signals crossed...

No confused moments here! We get your instructions right the FIRST time... then hop to your job.

If this is the kind of prompt, efficient service you're looking for... you're the kind of customer we're looking for.

PURE OIL PRODUCTS

JIM'S PURE SERVICE

Tires — Batteries — Tune-Ups — Brake Service — Wheel Alignment
PHONE 475-2822

WANT ADS

PIANO TUNING, Chelsea and area. Facilities for reconditioning and rebuilding. Used piano sales; reconditioned grands and verticals. R. Eklund, 426-2425.

**For Low Cost
Floor Covering**

We have small and large pieces, ends of rolls, etc., of linoleum and carpeting at close-out prices.

Many sizes and colors to select from.

MERKEL BROS.

SPECIAL OF WEEK

1967 Rebel 2-dr. hardtop, V-8, power steering, auto trans.
\$995

USED CARS

1968 Buick Electra 4-dr. hardtop (air cond) ————— \$2895

1967 Chrysler Newport 2-dr. hardtop (air cond) ————— \$1695

1967 Olds Cutlass Station Wagon ————— \$1495

1967 Buick Skylark 4-dr. sedan ————— \$1495

1967 Buick Special Station Wagon V-6 ————— \$1095

1966 Olds Cutlass 2-dr. hardtop ————— \$1195

1966 Buick Special Deluxe 2-dr. hardtop ————— \$1195

1965 Buick Skylark 2-dr. hardtop ————— \$995

1965 Olds Dyn 88 Cony ————— \$895

1965 Olds Dyn 8 4-dr. sedan ————— \$895

NOTICE

We still have a few cars from \$495 to \$100. Come out and look them over.

Sprague

Buick-Olds-Opel, Inc.
1500 S. Main St., Chelsea
Phone 475-8664
Evening 475-6271 or 475-8240
Open evenings by appointment.

MOTHERS!

"Sandra Parties" needs you

Weekly pay checks; color catalogue; bonuses! Gifts for the whole family! Hostess gifts! No collecting! No delivery! Call Margaret, 668-8998.

Girl Friday

For Tool Engineering Department
Typing required, general clerical duties.

APPLY

**Hoover Chemical
Products Div.**

435 W. 8 Mile Rd.
Whitmore Lake, Mich.
An Equal Opportunity Employer

Harper Pontiac

Sales & Service
Now have a choice selection of new Pontiacs to choose from.

SELECT YOURS NOW!

We also have a fine selection of one-owner used cars.

Harper Pontiac

Sales & Service
CHELSEA
Phone 475-5311 or 475-5451 days,
761-2999 evenings.
Open evenings by appointment

CREDIT

PROBLEM?
NO PROBLEM!

CONTACT
MR. SMALL
CREDIT ADVISOR
at

HENDERSON

FORD
662-3261
Ann Arbor

WANT ADS

Formal Wear
RENTAL SERVICE
From - Weddings - Special Events
6 different colors.

Foster's Men's Wear

FOR RENT—Apartment upstairs semi-furnished, adults. Utilities included. Security deposit required. Uptown Chelsea. Ph. 475-8045.

SALE

1970 Ford Pick-Ups
Still On Sale

PRICES START
AT
\$1995.00

Palmer Ford
Chelsea, GR 5-3271

SWEET CORN

For freezing, canning or by the dozen.

FRANCIS GROHNERT
1125 Bush Rd.
off Waterloo Rd.
Ph. Chelsea 475-8551

Temporary Price
Reduction on
DUTCH BOY
Exterior Oil and
Latex Paint

All colors and white
Oil, per gal. ————— now \$7.59
Latex, per gal. ————— now \$7.79

While our present
stock lasts.

Merkel Bros.
Open Mon. & Fri. Until 9 p.m.
Phone Chelsea 475-8621

PRINTING for the wedding, anniversary, or any occasion. Large selection, 10 percent off of album prices. John's Shop, 475-7500.

HURRY

Sign Up Now
New series starting for organ beginners — any age.

6 Lessons for \$6.00
Practice time available in studio or rental program.

REAL ESTATE

2-BEDROOM HOME on McComb St. in Ann Arbor. Must sell to settle estate. OC6593.

LARGE FARM near Gregory. 2-story home, stream, 5 acres of woods. Land contract available. LST094

2.91 ACRES of rolling land on M-52 in Lyndon township. This parcel backs up to state land. VCO7237

50 VACANT ACRES west of Pinckney. Woods, rolling land. Possibility of pond. Land contract. VA7079

5 and 10 ACRE PARCELS vacant land on M-106 close to I-94 Expressway. Choice building sites. VA7107

5-BEDROOM HOME on M-36. New well, new gas furnace. 1.6 acres. FHA terms.

WANT ADS

VACUUM CLEANERS — Electro-lux, authorized sales and service. James Cox, Manchester. Ph. 428-2831 or 428-9221. 43tf

XEROX COPIES made. First 20 at 20 cents each. Over 20, special prices. Merkel Brothers. 25tf

Green Acre Estates
Subdivision between
Dexter and Chelsea

If you are planning on buying a new home this spring, drive out Dexter-Chelsea Rd. to Lima Center Rd., turn left from Dexter way. One-acre sites with proposed three-bedroom houses; 2-car garage, basement or crawl space; priced in the low 20's. Approximately \$1,500 down will handle. We help with financing at the lowest interest rates available for those who qualify.

Two small lakes on property. Homes slightly higher on water. Choose your own house plans from several designs. Model opening soon.

Evinger Real Estate
426-3286

Dexter, Michigan

ART. FOR RENT — New 2-bed-room, carpeted, air conditioned. Appliances furnished. No children or pets. Phone 475-7180. 4tf

TRAVEL TRAILERS — 13-ft. and up; 10x55 ft. trailers. John R. Jones Trailer Sales, Gregory, Mich. Phone 498-2655. 43tf

THE LITTLE
FLOWER SHOP


Weddings, funerals, arrangements.
Flowers for all occasions.

Mildred Fish

3451 Waltrous Rd.
Phone 475-8508

GARAGE SPACE for rent. Call 475-2859. 7

**Education
Available
at
Washtenaw
Community
College**



WANT ADS

SEE US for transit mixed concrete. Klumpp Bros. Gravel Co. Phone Chelsea 475-2530, 4920 Loyeland Rd., Grass Lake, Mich. 44tf

WORK SHOE
HEADQUARTERS

Famous Red Wing Brand
\$12.95 to \$28.95

Foster's Men's Wear

CLOGGED
SEWERReynolds Sewer
Service

We Clean Sewers Without Digging
Drains Cleaned Electrically
FREE ESTIMATES
2-YEAR GUARANTEE
Phone Ann Arbor NO 3-5277
"Sewer Cleaning Is Our Business."
Not a Sideline" 38tf

FOR SALE by owner, 3-bedroom home, corner lot. Includes carpeting and drapes. Call 475-8759 after 5 p.m. on week days. Any time on Saturday. 5

TREE REMOVAL DONE — Also buyers of standing timber and walnut trees. Chelsea 475-7681. 34tf

FOR RENT — Second floor apartment for married couples only. One furnished, one unfurnished. No children, no pets. Phone 475-8469 after 5 p.m. 6tf

CUSTOM BUILDING
and
REMODELINGChelsea Associated
Builders, Inc.

Phone 475-8182 38tf

WALDEN AUCTION — BARN, 15000 Herman Rd., Manchester. New and used furniture. Lots of antiques. Open daily for business, 9 a.m. to 6 p.m. Phone 428-3842. 10

VERY SMALL HOUSE to be torn down for lumber. Call Gerald Roberts after 7 p.m., 475-8904. 7

FOR SALE — Tent, camper-trailer, \$175. Phone 475-8435. Call after 6 p.m. 7

FOR SALE — 8 purebred Beagle pups, 7 weeks old. GR 5-4981 or 854 Washington. 7

FOR SALE — Patterson Lake, beautiful year-round home on chain of 8 lakes. Garage, school bus comes to lake. Gregory, 498-2755. 7

WANT ADS

CARPET CLEANING by Burke. 12 cents a square foot, needs overnight to dry. In Chelsea call Merkel Brothers, 475-8621. 38tf

ATTENTION Working mothers — Will care for your children in my home while you work. Mrs. Judy Boyer, 475-8055. 28tf

WANTED TO RENT — House in Chelsea area by teacher. Call collect (313) 443-5879. 52tf

ROOFING — Shingle roofing and repairs. Free estimates. Licensed, insured. I perform all labor. References. Arnie's Roofing, Ph. 662-1763. 11

WILL BABYSIT up to 4 children. Call 475-2859. 7

FOR SALE — Lot on W. Middle, cor. Grant, 2 lots 100 ft. frontage. Ph. 475-7638. 47tf

FOR SALE — 7 h.p. riding lawnmower, good condition. Ph. 475-2905 after 4:30 p.m. 38tf

KITCHEN HELP WANTED — Chelsea Restaurant. Come to apply in person. 6tf

HIDE-A-BED SOFA, excellent condition, \$75. Phone 475-8963 after 6 p.m. 7

AVAILABLE to do house cleaning job or baby sitting. Reference. 475-2893. 8

FOR SALE — Antique tractor, McCormick-Deering F-20, 1933 model. Ph. 475-2245. 7

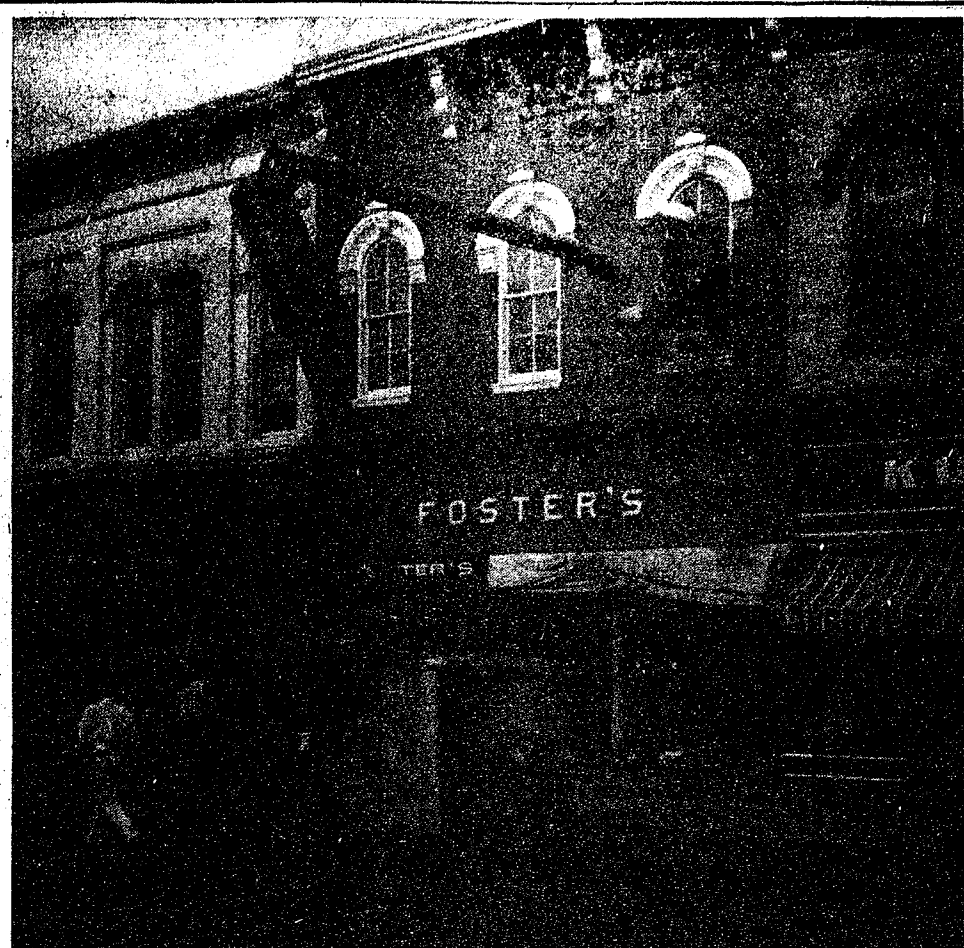
TRAILERS FOR SALE — Ideal summer or year round home on Clear Lake. Ready to move in. Ask for Pat Cook, 1500 Clear Lake Rd. Ph. 475-8770. 8

THANK YOU — Many thanks to Order of Eastern Star, Past Matrons Club, Aherlita Legion Auxiliary, Past Presidents Club, the VFW Auxiliary, Woman's Relief Corps, and to my many friends who made me happier in the hospital with their gifts, cards and visits. Ruth Walz

THANK YOU — To the Lima township residents who supported me in the primary your vote was sincerely appreciated. Lella Bauer.

THANK YOU — My thanks to all of my friends and relatives for remembering me with cards, calls and gifts, and doing my work for me during my stay in the hospital and since I came home. Clifford Heydlauff.

CARD OF THANKS — A special thank you to friends, relatives and neighbors who helped to make our 25th wedding anniversary a very memorable day. Grateful appreciation is extended to our sons and their wives, Mr. and Mrs. Warren Porath, Jr., Mr. and Mrs. Larry Porath and our daughter Shelly. Mr. and Mrs. Warren Porath, Sr.



FACE-LIFTING EFFORTS at Foster's Men's Wear, 109 S. Main, began Monday, Aug. 3. The pewter gray store trimmed in white serves to accent the turn-of-the-century, entablature of the building. Louie's Decorating Service is responsible for most of the repainting being done in the Central Business District.

School Board Briefs

At the Aug. 3 meeting of the Board of Education, present were Irwin, Smith, Koenn, Hopkins, Haselschwardt, Storey, Business Manager Mills, Principals Lane and Wojcicki. Absent was Powers. Many guests attended the meeting.

Meeting called to order at 8 p.m. by President Irwin.

Minutes of the July 20 meeting approved as read.

Motion by Hopkins, supported by Haselschwardt, to pay general fund bills of \$17,152.74. All ayes.

Motion by Koenn, supported by Hopkins, to adopt the agenda as amended. No. 9, procedure for

buying books from students. No. 10, business manager's report. All ayes.

An extended discussion was held regarding the parking of buses at the old junior high school site. The Chelsea Residential Area Betterment Society asked to be on the agenda on Aug. 17.

Motion by Koenn, supported by Storey, to accept the resignation of Mrs. Marie Roberts effective July 18, 1970. All ayes.

Motion by Hopkins, supported by Smith, to accept the resignation of Miss Sally Markey effective July 18, 1970. All ayes.

Trustee Carolyn Smith reported on the "Summer School Boardmanship" held at Eastern Michigan University on July 24 and 25.

The matter of cross country and a new wrestling mat were left on the table.

Donald Irwin made a report on the progress of negotiations with the CEA. The CEA has now requested fact-finding to aid in settling the contract.

Motion by Hopkins, supported by Koenn, to sign the contract of Mrs. Janice Newhouse. All ayes.

Motion by Haselschwardt, supported by Smith, to sign the contract of Mrs. Mary DeSmet. All ayes.

Motion by Koenn, supported by Hopkins, to sign the contract of Mrs. Beverly Yelsik. All ayes.

Motion by Haselschwardt, supported by Smith, to sign the contract of Mrs. Diana Veenkant. All ayes.

Motion by Hopkins, supported by Storey, to sign the contracts of clerical personnel. All ayes.

Business Manager Mills reported on the procedure for buying textbooks from high school students.

The Beach school boiler suit has been postponed until early September.

Motion by Storey, supported by Haselschwardt, to go into executive session at 10:05 p.m. in the Board room.

Meeting called back to order at 11:45 p.m. Meeting adjourned.

Council
Briefs

Regular session of the Chelsea Village Council was held Aug. 4. Present were President Funks, Clerk Harvey, Administrator Weber, Trustees Miller, Gorton, Musbach, Boylan and Dmoch. Absent was Trustee Chandler.

A lengthy discussion was held with approximately 15 residents of Park St. and Harrison St. regarding the use of the old Junior High school property. Citizens were advised that the property could continue to be used for functions relating to education since the property is not affected by the Village Zoning Ordinance.

Bids were received to remodel a section of the Municipal Building. Motion by Dmoch, supported by Gorton, to accept the following low bids: carpenter work—F. C. Belser; plumbing—Floyd D. Rowe & Son; painting—Doug Williams; floor covering—Merkel Bros.; counter tops—Custom Counters. Total of the bids amount to \$21,344.95. Roll call: Yeas all. Motion carried.

Trustee Musbach read a summary of the Police Department activity for the month of July as submitted by Chief Meranuck.

Motion by Gorton, supported by Musbach, to authorize and direct the Clerk to issue checks in payment of bills as submitted. Roll call: Yeas all. Motion carried.

Motion by Miller, supported by Boylan, to adjourn. Roll call: Yeas all. Motion carried.

Bicycle Owners
Urged To Register

Chelsea Police Department Chief Meranuck suggests that all bicycle owners be sure they register for a bicycle license. In case of theft, it is much easier to reclaim the bicycle if the license is known. The number of licenses registered is down significantly from last year, reports Chief Meranuck.

If you make mistakes every day don't feel discouraged; there is no one who doesn't.

State Fair Expands
Pony Tail Contest

Thirteen and 14-year-old girls who want to do up their hair in "pony-tail" style may now compete in the popular pony-tail contest at the 1970 Michigan State Fair.

E. J. (Jeff) Keirns, State Fair General manager, said that because of the popularity of long hair, a new category for 13- and 14-year-old girls has been added this year, making a total of five classes. The other age groups are 3-5, 6-7, 8-9 and 10-12.

Pony-tail judging, one of a series of children's contests held during the fair each year, will begin at 10 a.m. Monday, Aug. 31, with registration at 9 a.m.

The fair runs from Friday, Aug. 28 through Labor Day, Sept. 7.

Rotary mowers take a lot of the work out of the task of caring for your lawn, but mowers are dangerous. Check your lawn for debris before mowing. Use a mower that is shielded down well toward the ground and remember that the whirling knife-edge blade of the mower is dangerous.

If you're among the millions who enjoy a refreshing shower on a hot sultry day, investigate the new showerheads and temperature controls. The heads have as many as six settings, from a gentle flow to a bracing needle spray. Controls enable you to preset the water temperature, and it remains that way regardless of pressure changes.

MID-STATE
FINANCE CORP.

\$25 to \$1,000

For Any
Worthwhile Purpose

See or Call
FRANK HILL
at 475-8631

111 PARK STREET
CHELSEA, MICH.

TODAY'S THOUGHT

By LOUIS BURGHARDT

We seek happiness in material comforts, conveniences, gains and rewards. But life seldom gives us all these things exactly as, where and when we want them. When plans and hopes go awry and disappointment follows, it would be good to remember spiritual gains. CAN offset material losses. The following quote written long ago by an unknown Confederate soldier illustrates this beautifully . . .

"I asked God for strength that I might achieve, I was made weak that I might learn humbly to obey . . . I asked for health that I might do greater things, I was given infirmity that I might do better things . . . I asked for riches that I might be happy, I was given poverty that I might be wise . . . I asked for power that I might have praise of men, I was given weakness that I might feel the need of God . . . I asked for all things that I might enjoy life, I was given life that I might enjoy all things . . . I got nothing that I asked for but everything I had hoped for; almost despite myself, my unspoken prayers were answered . . . I am among all men, most richly blessed." . . . BURGHARDT FUNERAL HOME, 214 East Middle St., Chelsea, Mich. Phone GR 5-4141.

—SPECIALS—

1-LB. PKG. ECKRICH
Sliced Bologna 75c

1-LB. CAN DEMING
Red Salmon 96c

NO. 2 CAN WILDERNESS
Cherry Pie Filling 2 for 67c

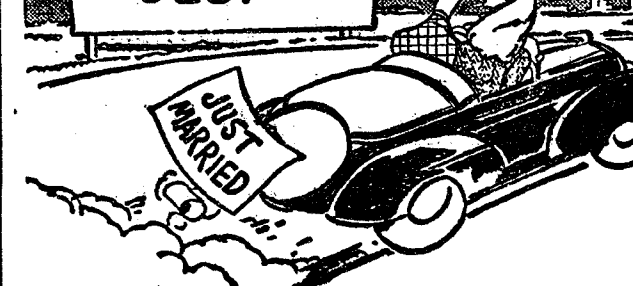
ASSORTED FLAVORS
Kool-Aid 6 pkgs. 26c

GIANT SIZE BOX
Tide 71c

We Have Howell Honey Sweet Melons

KUSTERER'S
FOOD MARKET

DIAL 475-2721 WE DELIVER

BANK AUTO
LOANS ARE
BEST!

ANY TRIP YOU MAKE will be more pleasant, if the car you drive is financed the Bank Way—economically, conveniently and with local people.

Now Paying the Highest Interest Rates
On Savings Accounts
Any Bank Can Pay

CHELSEA STATE BANK

Member Federal
Reserve System **FDIC** Member Federal
Deposit Insurance Corp.

FORD DEALERS
1
NO. 1 USED CAR
CLEARANCE

Our fast-moving new car clearance is swamping our used car lot with trade-ins. Many are late-model, low-mileage, very clean "creampuffs." Many are equipped with all the most popular options. All of them are priced to sell right now. We've got to move them to make room for more. Come take advantage of us!



Shop the No. 1
low-price dealer.
Your Ford Dealer

PALMER MOTOR SALES, INC.

CHELSEA, MICHIGAN

FOR PROFIT

FEED

HERE'S HOW
TO GET RESULTS . . .

Plan your feeding program around Fortified Feeds, scientifically compounded to increase growth, production.

Farmers' Supply Co.
Phone GR 5-5511

Community Calendar



Modern Mothers Child Study Club summer picnic with their children at Pierce Park Wednesday, Aug. 12 at 11:30 a.m. Bring own tableware, drink, and dish to pass.

Chelsea Jaycee Auxiliary Board meeting Wednesday, Aug. 12 at 8 p.m. at the home of Judy Eubanks.

Ice cream social by Spaulding for Children Auxiliary Sunday, Aug. 9 or Sunday, Aug. 16 in case of rain from 3 to 8 p.m. at Spaulding Farm, 3600 Waltrous Rd. Menu: Potato salad, baked beans, barbecues, hot dogs, cake and ice cream, hot and cold drinks. Some antiques for sale. adv 7

Last day for Chelsea Band Campers health forms to be turned in to Strieter's Store is Saturday, Aug. 8.

Chelsea Suburban Women's Bowling League meeting, Wednesday, Aug. 19, 7:30 p.m., Chelsea Lanes.

Regular meeting of Herbert J. McKune Post No. 31 at the Legion Home on Thursday, Aug. 6 at 8 p.m. Anyone who can report to the Legion Home about 6 or 6:30 p.m., before the meeting with grass whips, rakes or lawn tools of any kind could make good use of them.

TOPS Club at library, Wednesday afternoon group, 12:30 p.m. For information call 475-2592. Thursday evening group, 7 p.m. For information call 475-8720.

Fun night every Friday night at 7:30 p.m. at Korner House.

Dexter Township Board meeting Thursday, Aug. 6, at 8 p.m. at the new township hall on Dexter-Pineknay Rd., near North Territorial Rd.

Inquiries regarding the Chelsea blood bank may be directed to Harold Jones at Cavanaugh Lake in the event that Mrs. Dudley Holmes is unavailable.

American Legion and Auxiliary hospital equipment available by contacting either Mr. or Mrs. Eugene Martin, at 475-5867, after 4 p.m.

Chelsea Senior Citizens social meeting Thursday, Aug. 6, 7:30 p.m.

Chelsea Senior Citizens birthday party Thursday, Aug. 20. Pot-luck dinner 6:30 p.m.

Chelsea Co-op Nursery school still has a few openings in 3- and 4-year-old groups and several openings in the afternoon non-assist group. Call Mrs. Carl Robinson, 426-4128 for further information.

Zion Lutheran church Sunday school picnic, Sunday, Aug. 9, at 12:30 p.m. on the lawn of Loren Koengeter. Pot-luck dinner, ice cream and beverages furnished.

Fall bowling meeting Aug. 18 at 10 p.m. at Chelsea Lanes for Rolling Pin League.

Sewing every Tuesday afternoon at Korner House.

VFW Auxiliary regular business meeting Monday, Aug. 10 at the Rebekah Hall.

H. Koselka Elected...

(Continued from page one)

with his wife, Natalia, who is also an attorney. They have five children, Rita, Dolly, Tony, John and Margaret.

Mr. and Mrs. Frank Koselka, his parents, live at 1741 N. Lima Center Rd., Dexter. After graduating from Chelsea High School, Koselka went on to the University of Detroit for undergraduate study. He then attended the University of Michigan Law School and the Marquette University Law School, receiving his Doctor of Jurisprudence and joining Phi Delta Phi legal fraternity.

Help your child develop a skill in money management while he's still at home where you can guide him. An allowance can aid him in developing a sound money sense as well as giving him saving, spending and budgeting practice. Good money management is a learned skill and learned by repeated practice.

Miss Lisa Coletta of Middlebury, Conn., arrived Wednesday for a visit with her sister, Mrs. Charles Matloff and family.



DESTROYED AIRPLANE which crashed Aug. 1 near 11062 Goodband Rd., severely burned pilot Ray D. Greenfield. The swampy area into which it dropped was probably responsible for saving the 39-year-old Detroit pilot from burning to death. He is in critical condition at the University Hospital Burn Unit.

Airplane Crashes in Lyndon

Ray D. Greenfield, a 39-year-old Detroit man, is still listed in critical condition at the University of Michigan Hospital Burn Unit where he is being treated for first-, second-, and third-degree burns suffered Saturday, Aug. 1 when the single-engine Piper Cherokee airplane he was piloting grazed the tops of trees and crashed to the ground on a farm on Goodband Rd. in Lyndon township about six miles north of Chelsea.

Apparently Greenfield had mistakenly landed at a private airfield owned by Mrs. Chris Fitzsimmons at 11062 Goodband instead of a small airfield near Gregory in southwestern Livingston county which he was seeking.

When he found out he had landed in the wrong field, Greenfield, with three passengers accompany-

ing him, attempted to take off. After the plane failed to gain enough altitude, the three passengers got out and Greenfield said he would fly on to Gregory and send a car back for them, Sheriff's Deputy Joseph Swope was told.

Greenfield then attempted another takeoff, but after going about 1,000 feet, he still was not able to gain enough altitude, possibly because of taking off with a tailwind, witnesses reported. As the plane was about 50 feet off the ground, Greenfield swerved the craft and avoided one group of trees, but slammed into the top of

a second set, Swope said. After hitting the trees, the plane dropped straight to the ground, witnesses reported. It landed on the edge of a swamp and caught fire, but Greenfield managed to knock open a door and escape. Deputy Swope said the airplane was completely destroyed.

Louis Fitzsimmons, who was visiting his mother, witnessed the crash and drove a truck into the field to help the victim.

Officials from the Federal Aviation Agency were called to investigate.

DEATHS

Mrs. Helen Burns

Former Chelsea Resident, Dies in Des Moines, Ia.

Services for Mrs. Helen (White) Burns, 49, of Des Moines, Ia., were held Wednesday, July 29, at Dunns Funeral Home in Des Moines.

She was educational director for the American Dairy Association of Iowa and Dairy Industry Commission and supervised the Iowa Dairy Princess contests. She also was secretary for the Iowa Youth Program.

Born in Salem, Ia., he lived in Chelsea and was employed at Federal Screw Works Plant during the war before moving to Des Moines 20 years ago.

She was a member of Knox United Presbyterian church.

Surviving are a daughter, Susan, and a son, John, both at home, her mother, Mrs. Fred White of Salem, Ia., a brother, Delbert White of Stockbridge, and three sisters, Mrs. Leslie (Frances) Harlan of Colorado Springs, Colo., Mrs. Tom (Mildred) Savage of Silverton, Ore., and Mrs. William (Rebecca) Hawkins of Shreveport, La.

Mrs. Donald McKee

Chelsea Woman's Sister Dies at Lansing Hospital

Orpha (Marie) McKee died Aug. 4 at Lansing General Hospital. Daughter of the late William S. and Lula M. Scripser, she was born in Chelsea, Nov. 23, 1918. Married in June, 1934 to the late Paul Jones, she remarried Donald McKee, Nov. 2, 1950. She was employed by Michigan Bell Telephone Co. for 18 years.

Survivors include her husband, Donald McKee of Lansing, and a stepson, Lynn McKee, her son, Paul Jones, Jr., and his wife, Joan, and six grandchildren. Also included are Mrs. McKee's three sisters, Mrs. Floyd (Dora) Roderick and Mrs. John (Ida) Rosentreter both of Chelsea; Mrs. Clyde (Betty) Apteloff of Florida; her two brothers, Lawton Scripser of Napoleon, and Daniel Scripser of Ypsilanti; an aunt, Mrs. Guy Murphy of Chelsea, several nieces, nephews, and cousins.

Funeral services were held at Palmer-Bush Funeral Home in Lansing. Interment at Deep Dale Memorial Gardens, Lansing.

Grease Fire Damages Stove At Restaurant

A small grease fire Wednesday morning, July 29, caused minor damage to the stove at F & M Fine Foods, 104 N. Main. Bessie Sharp, owner of the restaurant, attributes the cause of the flame, which was confined to just the interior of the gas oven, to grease pattering from a meat loaf she was baking for the noon meal.

When Mrs. Sharp saw and felt the heat from the flames, she panicked momentarily, but dutifully turned off the burners, called the fire department, and took the meat loaf out as soon as possible to avoid further grease aggravation.

By the time the fire department arrived, at 11:10 a.m., the flame had burnt itself out, but there was excessive smoke in the restaurant. With the help of the fire department's big fan, the smoke was cleared out in a few minutes so Mrs. Sharp could remain open for the noon time crowd.

In spite of the smoke which poured out of the kitchen, customers at F & M kept right on eating and ordering their meals. Also Mrs. Sharp said that the meat loaf had not been damaged by the fire, in fact it wasn't even cooked and had to be baked for dinner.

The fire weakened and warped the stove somewhat and it will probably have to be replaced, Mrs. Sharp noted.

Baby Photo Contest...

(Continued from page one)

total amount of money in the canister will determine the winner.

Prizes will be awarded the first-, second-, and third-place winners. Top prize is a free portrait of the child done at Guenther Studio. Second-place winner will receive a gift from Dancer's Department Store, and a gift from Western Auto will be given to the third-place winner.

Canisters will remain on display at Stop & Shop until Aug. 22. Winners will be notified by phone on Aug. 24.

Too much money is as bad as too little.

Pet Contest Entry Form

Pet's Name _____
 Category in Which Entered _____
 Owner's Name _____
 Address _____
 Phone _____

Entries Sought for Pet Contest Sponsored By Jaycee Auxiliary

Next week's pet contest sponsored by the Chelsea Jaycee Auxiliary will be held Aug. 13 at 1 p.m. at Beach Junior High school. Send the entry blank as soon as possible to Mrs. Dan Eder, 151 Jackson St., Chelsea, if you want a chance for fame and glory for your pet.

First-, second- and third-place prizes will be awarded in the following five categories: the biggest, the tiniest, the most talented, the most unusual, the funniest, and the best-dressed.

More entries than have previously been received will be necessary to really make the pet contest exciting. The only requirement is that pets must be on a leash or in a cage. So don't be shy, your pet may surprise you. Winners will ride in the kiddies parade at fair time.

All costumes, props, or anything else to embellish the pets must be supplied by the contestant.

BIRTHS

A son, Steven Frederick, Thursday, July 30 at St. Joseph Mercy Hospital, Ann Arbor, to Mr. and Mrs. Andrew Ford, 98 Cedar Lake. Paternal grandparents are Mr. and Mrs. Fred A. Ford of Detroit.

Puffs COUPON

26¢

With This Coupon Additional at 31¢

Limit one coupon per person. Coupon expires Aug. 8, 1970.

BUDGET-WISE STORE

Chelsea's First Discount Store

116 S. MAIN ST. PHONE GR 9-1611

WE WILL UNDERBID

The delivered materials package of ANY pre-cut or pre-fabbed house in our selling area.

SURE IT'S STRONG LANGUAGE... How else can we convince you that the way to save is to custom-build with quality controlled materials from your local building supply center.

(Some customers report savings to \$2,000!)

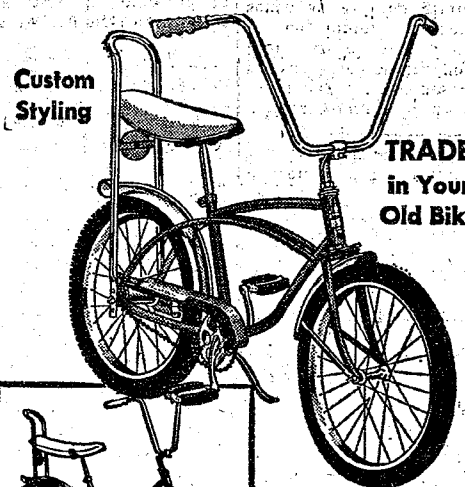
YOU SAY CUSTOM BUILDING TAKES LONGER? A competent local crew can have your home under cover in ONE week!*

CHELSEA LUMBER CO.

* (Based on a normal 1,500 sq. ft. design with 2 baths, 3 or 4 bedrooms, erected on a completed basement wall.)

GAMBLES

HIAWATHA - Best Bike Buys!



20-INCH Boys' or Girls

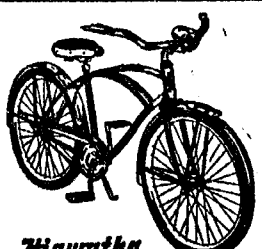
Hiawatha POLO BIKE
\$39⁹⁵

You get "slingshot" take-offs, thanks to knobby rear tire! Shorter wheelbase and Bendix coaster brake help you do groovy maneuvers. Hi-riser handle bars; banana saddle. Nifty chrome fenders. Yellow for boys, magenta for girls. 24-852,942



Hiawatha Lightweight
3-SPEED BICYCLE
\$41⁹⁵

Low priced sleek lightweight has twist grip shift for 3-speed get-up-and-GO! Front and rear caliper brakes. Black. 24-812,912



Hiawatha Deluxe
26-INCH BICYCLE
\$41⁹⁵

Lots of chrome fenders, rims, even the chain guard! Headlight, too. Black for boys, light blue for girls. 24-603,708

TRADE & SAVE NOW!

LAST 8 DAYS

Our Annual ANNIVERSARY SALE Ends Saturday, Aug. 15

Here Are Some of the Exciting Features

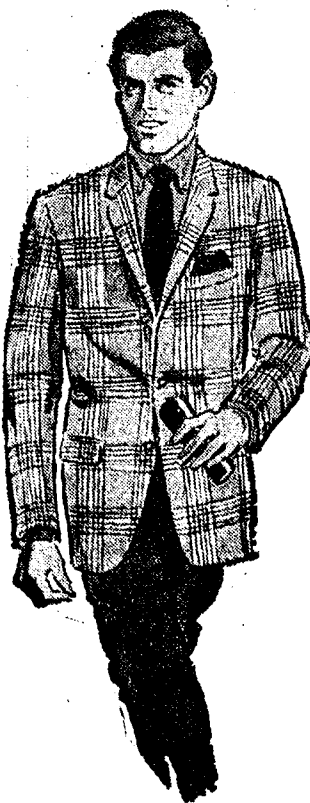
SPORT COATS
20 to 50% Off

CASUAL SLACKS
 Sizes 28 to 34 waist.
Now \$5.99

TROPICAL WEIGHT DRESS SLACKS
\$2.00 Off

STRIETER'S MEN'S WEAR

"The Place To Go for Brands You Know" Air-Conditioned for Your Shopping Comfort



AGRICULTURE IN ACTION

by GARY A. KLEINHENN
Michigan Farm Bureau

★ Farmers Need Freedom To Operate

A "gentleman" recently made the comment, "I just don't like farmers because of those lousy government subsidies." Well sir, farmers don't like them either. His eyebrows rose.

A lot of people are surprised when they hear this because the facts aren't known and it makes it difficult for the man on the land to carry the burden of this governmental stigma.

Let's make it clear, farmers stand on this platform. "We oppose the compensatory payment provisions of the Agricultural Act of 1965," so reads the 1970 national policy book of the American Farm Bureau Federation representing nearly two million volunteer member families which include three out of every four farmers who belong to any farm organization.

Of the literally hundreds of farm crops, only three: cotton, wheat and feed grains, states the AFBF, should remain as they are. A rapid transition to a free market system for these individuals would be courting disaster.

Support for this idea comes from neighboring Canada which says subsidies have failed to help farming become more viable. A Canadian federal task force on agriculture indicates in a 476-page report that the free market system is needed to stimulate demand in Canada's market and potential markets, to help farmers switch to the most marketable crops or to move out of production altogether.

To be sure, farming needs freedom. And the Wall Street Journal agrees. "The overhaul should start with recognition that the Federal Government has not in fact been running a rescue operation for family farmers but instead has been trying to manipulate the workings of a major industry down to the finest detail. In view of its monumental lack of success in this effort, it might begin letting the industry run more of its own affairs."

The Journal continues, "The costly control apparatus could and should be largely dismantled, over a transition period of five to ten years. Larger farmers would take over more of the market, but elimination of price supports and the like would free resources that could help cushion the change for smaller operators."

Broom Stick Polo Contest Planned As Feature at Fair

The Chelsea Community Fair Board invites boys and girls between the ages of 12 and 17 to participate in a Broom-Polo pony contest.

Mrs. Jerry Satterthwaite, daily activities chairman, explains the event as a polo game using brooms as mallets. Those who wish to enter the contest, to be held Thursday, Aug. 27, at 1 p.m. at the Fair, should contact team captains Janet Sibley, 475-8575, or Becky Van Riper, 475-8421.

Drinking drivers are involved in 25,000 of 55,000 auto fatalities according to the National Safety Council.



While making repairs
protect your loss of
normal business profit
with

**Business
Interruption
Insurance**

See your A-D Man

**A. D. MAYER
AGENCY, INC.**

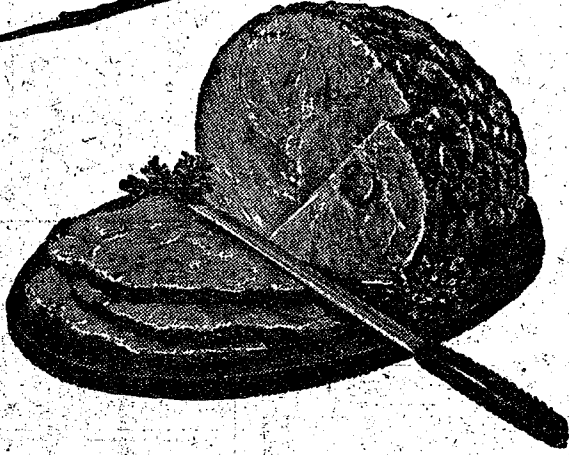
115 Park St. Chelsea
"Your Protection Is Our Business"
Phone 479-3061

Auto-Owners
INSURANCE MI IN

THE SUPERMARKET THAT'S JUST A LITTLE BIT BETTER

Stop & Shop

14901 Old U.S.-12
Corner at M-52
Chelsea



"Triple R Farms"
SEMI-BONELESS

HAMS

Whole or Half **79¢**

DE-FATTED ★ HICKORY SMOKED ★ READY-TO-EAT

"Triple R Farms" U.S.D.A. Choice

Chuck Roast . . . 69¢ lb.

"Triple R Farms" Fresh Dressed

Chicken Breasts . . . 69¢ lb.

"Triple R Farms" Fresh Dressed

Chicken LEGS . . . 59¢ lb.

Spencer's Hickory Smoked

Sliced Bacon . . . 89¢ lb.

Morrell's Pride

Skinless Wieners . . . 69¢ lb.

"Triple R Farms" Mich. Grade 1

Sliced Bologna . . . 59¢ lb.

"TRIPLE R
FARMS"
U.S.D.A.
CHOICE

**CHUCK
ROAST**

Blade Cut

59¢ lb.

"Triple R Farms" U.S.D.A. Choice

Fillet of Chuck Roast . . . 99¢ lb.

Stop & Shop's Fresh Lean, All American Beef

Hamburger . . . 65¢ lb.

"Triple R Farms" Mich. Grade 1

Ring Bologna . . . 69¢ lb.

Tender, Delicious

Cube Steaks . . . \$1.39 lb.

Lean, Tender, Boneless & Cubed

Breaded Pork Cutlets . . . 89¢ lb.

"Triple R Farms" U.S.D.A. Choice

Ground Steak . . . 99¢ lb.

McDonald's Low Fat

MILK . . . 3 1/2 Gallon Cartons **\$1**

**SAVE WITH BRANDS
YOU KNOW AND TRUST**

Franco American

SPAGHETTI

1 lb., 10 oz. Can **22¢**

Hi C

Fruit Drinks

assorted flavors

1 qt., 14 oz. Can **25¢**

McDonald's Fresh Delicious

Homogenized Milk

Gallon Carton **89¢**

Del Monte

Whole Kernel Corn

1 lb., 7 oz. Can **21¢**

Jiffy Assorted Frosting or

Cake Mixes

7 1/2 oz. Box **10¢**

Handy No Deposit Bottles

Coca-Cola

Quart Bottle **4 for \$1**

Farm Fresh Produce

Vine Ripened Jumbo 27 Size

Head Lettuce . . . 19¢

California

Cantaloupes . . . 3 for \$1

COLD BEER

ALL POPULAR BRANDS

HOME-GROWN

CORN

12 ears **59¢**

MICHIGAN U.S. NO. 1

POTATOES

10 lbs. **59¢**

Hershey

CHOCOLATE SYRUP

1 lb. Can **15¢**

McDonald's Assorted Flavors

Popsicles

pkg. of 12 **49¢**

Del Monte

Peas

1 lb., 1 oz. Can **21¢**

Stokely's

Fruit Cocktail

1 lb., 1 oz. Can **21¢**

Del Monte

Peaches

Halves or sliced

1 lb., 13 oz. Can **29¢**

All Purpose Flour

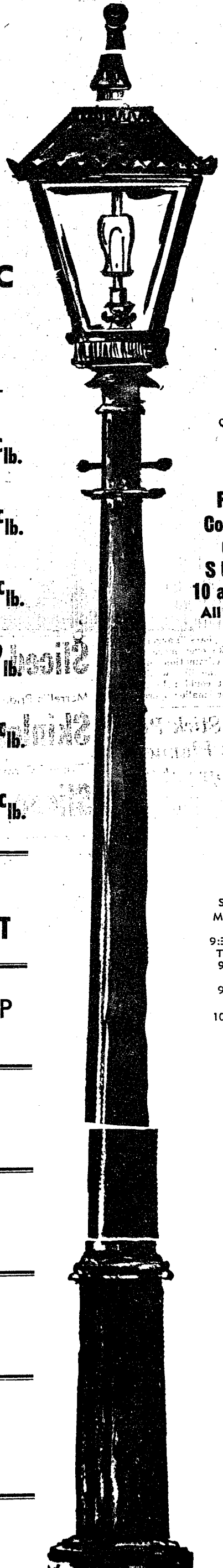
Gold Medal

10 lb. Bag **88¢**

WE
RESERVE
THE
RIGHT
TO
LIMIT
QUANTITIES

**For Your
Convenience
OPEN
SUNDAY
10 a.m. - 4 p.m.
All Sale Prices
Effective
Sundays**

STORE HOURS:
Monday, Tuesday,
Wednesday
9:30 a.m. - 6 p.m.
Thursday, Friday
9 a.m. - 9 p.m.
SATURDAY
9 a.m. to 6 p.m.
SUNDAY
10 a.m. to 4 p.m.



Legal Notices

MORTGAGE SALE
Default has been made in the conditions of a mortgage made by NORTHALL SMITH and NELA J. MINESMITH, his wife, to M. TASHIMURA, DESIGNER, Mortgagee, dated April 22, 1969, recorded on September 11, 1969, in Liber 1801 on page 467 of Washtenaw County Records, Michigan, and assigned by said Mortgagee to C. C. CORPORATION by an assignment dated August 12, 1969, and recorded on September 18, 1969, in Liber 1801, on page 468, Washtenaw County Records, Michigan, on which mortgage there is a balance due at the date hereof the sum of Two Thousand Four Hundred Twenty and no/100 Dollars (\$2,420.00), including interest at 14.15% per annum.

Under the power of sale contained in and pursuant to the mortgage in such case made and provided, notice is hereby given that said mortgage will be foreclosed by a sale of the mortgaged premises or some part of them, at public vendue, at the west entrance of the Washtenaw County Building, City of Ann Arbor, Washtenaw County, Michigan, at 10:00 o'clock a.m., on Friday, October 30, 1970. Said premises are located in Township 36 North, Range 4 East, Section 10, Township of Washtenaw County, Michigan, and are described as:

Lot 290, Horseshoe Division, Shady Beach Subdivision, North Half of Section 10, Township 36 North, Range 4 East, Township of Washtenaw County, Michigan, according to the Recorded Plat thereof, Washtenaw County, Michigan, and described as follows:

The length of the period of redemption from such sale will be six months.

Dated: July 30, 1970.

G.C.S. CORPORATION
Assignee of Mortgagee.

15919 West Ten Mile Road,
Southfield, Michigan 48075

July 30-Oct. 22

MORTGAGE SALE

Default having been made in the terms and conditions of a mortgage made by BENJAMIN R. STACY and RUTH A. STACY, his wife, of 2541 Oakdale, Ann Arbor, Michigan, to WAYNE FEDERAL SAVINGS & LOAN ASSOCIATION of Wayne County, Michigan, Mortgagee, dated the 24th day of June, A. D. 1970, and recorded in the office of the Register of Deeds, for the County of Washtenaw and State of Michigan, on the 28th day of June, A. D. 1970, in Liber 1330 of Washtenaw County Records, Michigan, on page 688, on which mortgage there is claimed to be due, at the date of this notice, the sum of \$29,638.30 Dollars, and proceedings at law or in equity having been instituted to recover the debt secured by said mortgage, or any part thereof. Now, therefore, by virtue of the power of sale contained in said mortgage, and pursuant to the statute of the State of Michigan in such case made and provided, notice is hereby given that on Thursday, the 22nd day of October, A. D. 1970, at 10:00 o'clock a.m., said mortgage will be foreclosed by a sale at public auction, to the highest bidder at the west entrance of the Washtenaw County Building in the City of Ann Arbor, Washtenaw County, Michigan, said building being located in the City of Ann Arbor, Washtenaw County, Michigan, and described as follows:

Lot 79 and the North 1/2 of Section 10, Township 36 North, Range 4 East, Township of Washtenaw County, Michigan, and described as follows:

Lot 79 and the North 1/2 of Section 10, Township 36 North, Range 4 East, Township of Washtenaw County, Michigan, and described as follows:

Lot 79 and the North 1/2 of Section 10, Township 36 North, Range 4 East, Township of Washtenaw County, Michigan, and described as follows:

Lot 79 and the North 1/2 of Section 10, Township 36 North, Range 4 East, Township of Washtenaw County, Michigan, and described as follows:

Lot 79 and the North 1/2 of Section 10, Township 36 North, Range 4 East, Township of Washtenaw County, Michigan, and described as follows:

Lot 79 and the North 1/2 of Section 10, Township 36 North, Range 4 East, Township of Washtenaw County, Michigan, and described as follows:

Lot 79 and the North 1/2 of Section 10, Township 36 North, Range 4 East, Township of Washtenaw County, Michigan, and described as follows:

Lot 79 and the North 1/2 of Section 10, Township 36 North, Range 4 East, Township of Washtenaw County, Michigan, and described as follows:

Lot 79 and the North 1/2 of Section 10, Township 36 North, Range 4 East, Township of Washtenaw County, Michigan, and described as follows:

Lot 79 and the North 1/2 of Section 10, Township 36 North, Range 4 East, Township of Washtenaw County, Michigan, and described as follows:

Lot 79 and the North 1/2 of Section 10, Township 36 North, Range 4 East, Township of Washtenaw County, Michigan, and described as follows:

Lot 79 and the North 1/2 of Section 10, Township 36 North, Range 4 East, Township of Washtenaw County, Michigan, and described as follows:

Lot 79 and the North 1/2 of Section 10, Township 36 North, Range 4 East, Township of Washtenaw County, Michigan, and described as follows:

Lot 79 and the North 1/2 of Section 10, Township 36 North, Range 4 East, Township of Washtenaw County, Michigan, and described as follows:

Lot 79 and the North 1/2 of Section 10, Township 36 North, Range 4 East, Township of Washtenaw County, Michigan, and described as follows:

Lot 79 and the North 1/2 of Section 10, Township 36 North, Range 4 East, Township of Washtenaw County, Michigan, and described as follows:

Lot 79 and the North 1/2 of Section 10, Township 36 North, Range 4 East, Township of Washtenaw County, Michigan, and described as follows:

Lot 79 and the North 1/2 of Section 10, Township 36 North, Range 4 East, Township of Washtenaw County, Michigan, and described as follows:

Lot 79 and the North 1/2 of Section 10, Township 36 North, Range 4 East, Township of Washtenaw County, Michigan, and described as follows:

Lot 79 and the North 1/2 of Section 10, Township 36 North, Range 4 East, Township of Washtenaw County, Michigan, and described as follows:

Lot 79 and the North 1/2 of Section 10, Township 36 North, Range 4 East, Township of Washtenaw County, Michigan, and described as follows:

Lot 79 and the North 1/2 of Section 10, Township 36 North, Range 4 East, Township of Washtenaw County, Michigan, and described as follows:

Lot 79 and the North 1/2 of Section 10, Township 36 North, Range 4 East, Township of Washtenaw County, Michigan, and described as follows:

Lot 79 and the North 1/2 of Section 10, Township 36 North, Range 4 East, Township of Washtenaw County, Michigan, and described as follows:

Lot 79 and the North 1/2 of Section 10, Township 36 North, Range 4 East, Township of Washtenaw County, Michigan, and described as follows:

Lot 79 and the North 1/2 of Section 10, Township 36 North, Range 4 East, Township of Washtenaw County, Michigan, and described as follows:

Lot 79 and the North 1/2 of Section 10, Township 36 North, Range 4 East, Township of Washtenaw County, Michigan, and described as follows:

Lot 79 and the North 1/2 of Section 10, Township 36 North, Range 4 East, Township of Washtenaw County, Michigan, and described as follows:

Lot 79 and the North 1/2 of Section 10, Township 36 North, Range 4 East, Township of Washtenaw County, Michigan, and described as follows:

Lot 79 and the North 1/2 of Section 10, Township 36 North, Range 4 East, Township of Washtenaw County, Michigan, and described as follows:

Lot 79 and the North 1/2 of Section 10, Township 36 North, Range 4 East, Township of Washtenaw County, Michigan, and described as follows:

Lot 79 and the North 1/2 of Section 10, Township 36 North, Range 4 East, Township of Washtenaw County, Michigan, and described as follows:

Lot 79 and the North 1/2 of Section 10, Township 36 North, Range 4 East, Township of Washtenaw County, Michigan, and described as follows:

Lot 79 and the North 1/2 of Section 10, Township 36 North, Range 4 East, Township of Washtenaw County, Michigan, and described as follows:

Lot 79 and the North 1/2 of Section 10, Township 36 North, Range 4 East, Township of Washtenaw County, Michigan, and described as follows:

Lot 79 and the North 1/2 of Section 10, Township 36 North, Range 4 East, Township of Washtenaw County, Michigan, and described as follows:

Lot 79 and the North 1/2 of Section 10, Township 36 North, Range 4 East, Township of Washtenaw County, Michigan, and described as follows:

Lot 79 and the North 1/2 of Section 10, Township 36 North, Range 4 East, Township of Washtenaw County, Michigan, and described as follows:

Lot 79 and the North 1/2 of Section 10, Township 36 North, Range 4 East, Township of Washtenaw County, Michigan, and described as follows:

Lot 79 and the North 1/2 of Section 10, Township 36 North, Range 4 East, Township of Washtenaw County, Michigan, and described as follows:

Lot 79 and the North 1/2 of Section 10, Township 36 North, Range 4 East, Township of Washtenaw County, Michigan, and described as follows:

Lot 79 and the North 1/2 of Section 10, Township 36 North, Range 4 East, Township of Washtenaw County, Michigan, and described as follows:

Lot 79 and the North 1/2 of Section 10, Township 36 North, Range 4 East, Township of Washtenaw County, Michigan, and described as follows:

Lot 79 and the North 1/2 of Section 10, Township 36 North, Range 4 East, Township of Washtenaw County, Michigan, and described as follows:

Lot 79 and the North 1/2 of Section 10, Township 36 North, Range 4 East, Township of Washtenaw County, Michigan, and described as follows:

Lot 79 and the North 1/2 of Section 10, Township 36 North, Range 4 East, Township of Washtenaw County, Michigan, and described as follows:

Lot 79 and the North 1/2 of Section 10, Township 36 North, Range 4 East, Township of Washtenaw County, Michigan, and described as follows:

Lot 79 and the North 1/2 of Section 10, Township 36 North, Range 4 East, Township of Washtenaw County, Michigan, and described as follows:

Lot 79 and the North 1/2 of Section 10, Township 36 North, Range 4 East, Township of Washtenaw County, Michigan, and described as follows:

+ Services in Our Churches +

ST. BARNABAS EPISCOPAL CHURCH
20504 Old US-12
Sunday, Aug. 9—
9:00 a.m.—Regular church services.

CHURCH OF CHRIST
13681 Old US-12, East
R. D. Parnell, Minister
Sunday, Aug. 9—
10:00 a.m.—Church school.
11:00 a.m.—Worship service.
6:00 p.m.—Worship service.
Every Wednesday—
7:30 p.m.—Bible Study.

ST. PAUL UNITED CHURCH OF CHRIST
The Rev. Warner Siebert, Pastor
Sunday, Aug. 9—
9:00 a.m.—Family worship; guest minister, the Rev. Ronald Tipton; sermon title, "Suppose They Built a University and Everybody Came."
9:20 a.m.—Church school.

CHELSEA MEDICENTER
Sunday, Aug. 9—
12:30 p.m.—Sunday worship service.

GREGORY BAPTIST CHURCH
The Rev. Grant Lapham, Pastor
Sunday, Aug. 9—
10:00 a.m.—Worship service.
11:15 a.m.—Church school.
6:30 p.m.—Baptist Youth Fellowship.
7:30 p.m.—Evening worship service.

NORTH LAKE UNITED METHODIST CHURCH
The Rev. Frederick Atkinson, Pastor
Sunday, Aug. 9—
9:30 a.m.—Worship service.
10:30 a.m.—Sunday school.

FIRST CHURCH OF CHRIST, SCIENTIST
1883 Washtenaw Ave., Ann Arbor
Sunday, Aug. 9—
10:30 a.m.—Sunday school.
10:30 a.m.—Morning service.
Lesson-sermon: "Spirit."

METHODIST HOME CHAPEL
The Rev. R. L. Clemons, Chaplain
V. O. Johnson, Administrator
Sunday, Aug. 9—
8:45 a.m.—Worship service.

WATERLOO VILLAGE CHURCH
United Methodist Church
The Rev. Donald Fry, Pastor
Sunday, Aug. 9—
10:00 a.m.—Sunday school.
11:15 a.m.—Worship service.
7:00 p.m.—Youth Fellowship.

ST. JOHN'S EVANGELICAL AND REFORMED CHURCH
(United Church of Christ)
Rogers Corners
The Rev. David J. Kleis
Sunday, Aug. 9—
10:30 a.m.—Worship service.
9:30 a.m.—Sunday school.

FIRST UNITED PRESBYTERIAN CHURCH
Thadilla
The Rev. T. H. Liang
Sunday, Aug. 9—
9:45 a.m.—Sunday school.
11:00 a.m.—Worship service.
Every Tuesday—
7:30 p.m.—Choir practice.

ST. JACOB EVANGELICAL LUTHERAN CHURCH
12501 Reithmiller Rd., Grass Lake
The Rev. Andrew Bloom, Pastor
Sunday, Aug. 9—
9:00 a.m.—Sunday school.
10:15 a.m.—Divine services.

ST. THOMAS EVANGELICAL LUTHERAN CHURCH
The Rev. Daniel L. Mattson, Pastor
Sunday, Aug. 9—
10:00 a.m.—Worship service.
11:00 a.m.—Sunday school and Bible study.

BETHEL EVANGELICAL AND REFORMED CHURCH
(United Church of Christ)
Freedom Township
The Rev. Roman A. Reineck
Sunday, Aug. 9—
10:00 a.m.—Worship.
10:00 a.m.—Sunday school.

CONGREGATIONAL CHURCH
(United Church of Christ)
The Rev. Daniel Kelin, Pastor
Sunday, Aug. 9—
10:00 a.m.—Worship.
Wednesday, Aug. 12—
6:30 a.m.—Men's breakfast.

SALEM GROVE UNITED METHODIST CHURCH
The Rev. Frederick Atkinson, Pastor
Sunday, Aug. 9—
10:00 a.m.—Sunday school.
11:00 a.m.—Worship service.

ST. MARY'S CATHOLIC CHURCH
The Rev. F. Francis Wahpawiak
Saturday, Aug. 8—
7:30 p.m.—Massa.
Sunday, Aug. 9—
Masses at 6:30 a.m., 8:00 a.m., 10:00 a.m., and 11:30 a.m.

CHELSEA BAPTIST CHURCH
337 Wilkinson
Sunday, Aug. 9—
10:00 a.m.—Sunday school.
11:00 a.m.—Worship service.
Nursery care available during all services.

OUR SAVIOR LUTHERAN CHURCH
Rebekah Hall, 1194 M-52
The Rev. William H. Keller, Pastor
Sunday, Aug. 9—
9:15 a.m.—Sunday school and Youth Bible Class.
10:30 a.m.—Worship Service.
Every Thursday—
6:00 p.m.—Youth Confirmation Class.

ST. JOHN'S EVANGELICAL AND REFORMED CHURCH
(United Church of Christ)
Rogers Corners
The Rev. David J. Kleis
Sunday, Aug. 9—
10:30 a.m.—Worship service.
9:30 a.m.—Sunday school.

FIRST UNITED PRESBYTERIAN CHURCH
Thadilla
The Rev. T. H. Liang
Sunday, Aug. 9—
9:45 a.m.—Sunday school.
11:00 a.m.—Worship service.
Every Tuesday—
7:30 p.m.—Choir practice.

ST. JACOB EVANGELICAL LUTHERAN CHURCH
12501 Reithmiller Rd., Grass Lake
The Rev. Andrew Bloom, Pastor
Sunday, Aug. 9—
9:00 a.m.—Sunday school.
10:15 a.m.—Divine services.

ST. THOMAS EVANGELICAL LUTHERAN CHURCH
The Rev. Daniel L. Mattson, Pastor
Sunday, Aug. 9—
10:00 a.m.—Worship service.
11:00 a.m.—Sunday school and Bible study.

BETHEL EVANGELICAL AND REFORMED CHURCH
(United Church of Christ)
Freedom Township
The Rev. Roman A. Reineck
Sunday, Aug. 9—
10:00 a.m.—Worship.
10:00 a.m.—Sunday school.

CONGREGATIONAL CHURCH
(United Church of Christ)
The Rev. Daniel Kelin, Pastor
Sunday, Aug. 9—
10:00 a.m.—Worship.
Wednesday, Aug. 12—
6:30 a.m.—Men's breakfast.

SALEM GROVE UNITED METHODIST CHURCH
The Rev. Frederick Atkinson, Pastor
Sunday, Aug. 9—
10:00 a.m.—Sunday school.
11:00 a.m.—Worship service.

ST. MARY'S CATHOLIC CHURCH
The Rev. F. Francis Wahpawiak
Saturday, Aug. 8—
7:30 p.m.—Massa.
Sunday, Aug. 9—
Masses at 6:30 a.m., 8:00 a.m., 10:00 a.m., and 11:30 a.m.

CHELSEA BAPTIST CHURCH
337 Wilkinson
Sunday, Aug. 9—
10:00 a.m.—Sunday school.
11:00 a.m.—Worship service.
Nursery care available during all services.

OUR SAVIOR LUTHERAN CHURCH
Rebekah Hall, 1194 M-52
The Rev. William H. Keller, Pastor
Sunday, Aug. 9—
9:15 a.m.—Sunday school and Youth Bible Class.
10:30 a.m.—Worship Service.
Every Thursday—
6:00 p.m.—Youth Confirmation Class.

ST. JOHN'S EVANGELICAL AND REFORMED CHURCH
(United Church of Christ)
Rogers Corners
The Rev. David J. Kleis
Sunday, Aug. 9—
10:30 a.m.—Worship service.
9:30 a.m.—Sunday school.

FIRST UNITED PRESBYTERIAN CHURCH
Thadilla
The Rev. T. H. Liang
Sunday, Aug. 9—
9:45 a.m.—Sunday school.
11:00 a.m.—Worship service.
Every Tuesday—
7:30 p.m.—Choir practice.

ST. JACOB EVANGELICAL LUTHERAN CHURCH
12501 Reithmiller Rd., Grass Lake
The Rev. Andrew Bloom, Pastor
Sunday, Aug. 9—
9:00 a.m.—Sunday school.
10:15 a.m.—Divine services.

ST. THOMAS EVANGELICAL LUTHERAN CHURCH
The Rev. Daniel L. Mattson, Pastor
Sunday, Aug. 9—
10:00 a.m.—Worship service.
11:00 a.m.—Sunday school and Bible study.

FIRST UNITED METHODIST CHURCH
The Rev. Clive Dickens, Pastor
Sunday, Aug. 9—
10:00 a.m.—Church school, nursery through 4th grade.
10:00 a.m.—Worship service.
Monday, Aug. 10—
8:00 p.m.—The Administrative Board meeting.

ZION LUTHERAN CHURCH
Corner of Fletcher, Waters Rds. (Rogers Corners)
The Rev. John R. Morris, Pastor
Sunday, Aug. 9—
9:00 a.m.—Sunday school.
10:15 a.m.—Worship service.
Sunday School picnic.

NORTH SHARON COMMUNITY BIBLE CHURCH
Sylvan and Washburn Rds.
Sunday, Aug. 9—
10:00 a.m.—Sunday school.
11:00 a.m.—Worship service.
6:30 p.m.—Young People's service.

ST. JOHN'S EVANGELICAL AND REFORMED CHURCH
(United Church of Christ)
Francisco
The Rev. Robert Townley
Sunday, Aug. 9—
10:00 a.m.—Worship service.
10:20 a.m.—Sunday school.

FIRST ASSEMBLY OF GOD CHURCH
The Rev. Thode B. Thodeson, Pastor
Sunday, Aug. 9—
10:00 a.m.—Sunday school.
11:00 a.m.—Worship service.
7:00 p.m.—Evangelistic service.
Every Thursday—
7:00 p.m.—Midweek services.

IMMANUEL BIBLE CHURCH
145 E. Summit St.
Sunday, Aug. 9—
9:45 a.m.—Sunday school, nursery provided.
11:00 a.m.—Morning worship, nursery provided.
7:00 p.m.—Evening service.
Every Wednesday—
Family hour, prayer meeting and Bible study.

ST. JOHN'S EVANGELICAL AND REFORMED CHURCH
(United Church of Christ)
Rogers Corners
The Rev. David J. Kleis
Sunday, Aug. 9—
10:30 a.m.—Worship service.
9:30 a.m.—Sunday school.

FIRST UNITED PRESBYTERIAN CHURCH
Thadilla
The Rev. T. H. Liang
Sunday, Aug. 9—
9:45 a.m.—Sunday school.
11:00 a.m.—Worship service.
Every Tuesday—
7:30 p.m.—Choir practice.

ST. JACOB EVANGELICAL LUTHERAN CHURCH
12501 Reithmiller Rd., Grass Lake
The Rev. Andrew Bloom, Pastor
Sunday, Aug. 9—
9:00 a.m.—Sunday school.
10:15 a.m.—Divine services.

ST. THOMAS EVANGELICAL LUTHERAN CHURCH
The Rev. Daniel L. Mattson, Pastor
Sunday, Aug. 9—
10:00 a.m.—Worship service.
11:00 a.m.—Sunday school and Bible study.

BETHEL EVANGELICAL AND REFORMED CHURCH
(United Church of Christ)
Freedom Township
The Rev. Roman A. Reineck
Sunday, Aug. 9—
10:00 a.m.—Worship.
10:00 a.m.—Sunday school.

CONGREGATIONAL CHURCH
(United Church of Christ)
The Rev. Daniel Kelin, Pastor
Sunday, Aug. 9—
10:00 a.m.—Worship.
Wednesday, Aug. 12—
6:30 a.m.—Men's breakfast.

SALEM GROVE UNITED METHODIST CHURCH
The Rev. Frederick Atkinson, Pastor
Sunday, Aug. 9—
10:00 a.m.—Sunday school.
11:00 a.m.—Worship service.

ST. MARY'S CATHOLIC CHURCH
The Rev. F. Francis Wahpawiak
Saturday, Aug. 8—
7:30 p.m.—Massa.
Sunday, Aug. 9—
Masses at 6:30 a.m., 8:00 a.m., 10:00 a.m., and 11:30 a.m.

CHELSEA BAPTIST CHURCH
337 Wilkinson
Sunday, Aug. 9—
10:00 a.m.—Sunday school.
11:00 a.m.—Worship service.
Nursery care available during all services.

OUR SAVIOR LUTHERAN CHURCH
Rebekah Hall, 1194 M-52
The Rev. William H. Keller, Pastor
Sunday, Aug. 9—
9:15 a.m.—Sunday school and Youth Bible Class.
10:30 a.m.—Worship Service.
Every Thursday—
6:00 p.m.—Youth Confirmation Class.

ST. JOHN'S EVANGELICAL AND REFORMED CHURCH
(United Church of Christ)
Rogers Corners
The Rev. David J. Kleis
Sunday, Aug. 9—
10:30 a.m.—Worship service.
9:30 a.m.—Sunday school.

FIRST UNITED PRESBYTERIAN CHURCH
Thadilla
The Rev. T. H. Liang
Sunday, Aug. 9—
9:45 a.m.—Sunday school.
11:00 a.m.—Worship service.
Every Tuesday—
7:30 p.m.—Choir practice.

ST. JACOB EVANGELICAL LUTHERAN CHURCH
12501 Reithmiller Rd., Grass Lake
The Rev. Andrew Bloom, Pastor
Sunday, Aug. 9—
9:00 a.m.—Sunday school.
10:15 a.m.—Divine services.

CROSSWORD PUZZLE

ACROSS

1. Radar spot
5. Monsters and such
11. Aggie
12. Badge
13. Haul
14. Very poor marks
15. Humorous
16. Freudian term
17. Tin foil
19. Airline abbreviation
20. Shoe width size
21. Picked out
23. Com. parative suffix
24. Where to spend a centime
26. Fishing
28. More east than north
29. Kind of coop
30. Sagacious
32. Assemble, as troops
35. Type size
36. Suite
38. Greek letter
39. Hall!
41. Ravel
42. Verb form
43. Neckline shapes
45. One
46. Mexican rubber tree

DOWN

1. Faith
2. Cry from the back row
3. Participle ending
4. Writer's addendum
5. Adjacent
6. Type measure
7. Warp
8. Wild plum
9. Camped out
10. Laboratory items
14. Shag or twist
17. Two fine
18. Symbol for neon
22. Stylish
25. Roman money
27. Canadian province: abbr.
29. Mortal
30. Uses a loom
31. Reverse
32. Quagmire
33. Enriched
34. Steam pipes
37. From
40. Unearthly
44. Peruvian coin
46. White yam
48. Music note
49. Correlative word

Today's Answer

Across: 1. Radar spot, 5. Monsters and such, 11. Aggie, 12. Badge, 13. Haul, 14. Very poor marks, 15. Humorous, 16. Freudian term, 17. Tin foil, 19. Airline abbreviation, 20. Shoe width size, 21. Picked out, 23. Com. parative suffix, 24. Where to spend a centime, 26. Fishing, 28. More east than north, 29. Kind of coop, 30. Sagacious, 32. Assemble, as troops, 35. Type size, 36. Suite, 38. Greek letter, 39. Hall!, 41. Ravel, 42. Verb form, 43. Neckline shapes, 45. One, 46. Mexican rubber tree.

Down: 1. Faith, 2. Cry from the back row, 3. Participle ending, 4. Writer's addendum, 5. Adjacent, 6. Type measure, 7. Warp, 8. Wild plum, 9. Camped out, 10. Laboratory items, 14. Shag or twist, 17. Two fine, 18. Symbol for neon, 22. Stylish, 25. Roman money, 27. Canadian province: abbr., 29. Mortal, 30. Uses a loom, 31. Reverse, 32. Quag



SNOW IN JULY: Wandering reporter Don Turner's camper was caught in a snowstorm as he headed back on the Denali Highway toward southeast Alaska. At Mile 63 on the highway, the weather was so bad his journey was temporarily called off.

Variety of Accidents in Area Reported to Sheriff's Dept.

Recent accidents reported in the area at the Washtenaw County Sheriff's Department office include the injury of pedestrian Dennis E. Bauer at 11:20 p.m. on July 20 at Jackson Rd. near Wagner, in Scio township. Bauer was crossing the road apparently with his back partially to traffic. Due to his hearing condition, he did not notice the vehicle which Clark Clyde Clark was driving until it was too late. Clark did not see Bauer in the roadway due to Bauer's dark clothing. Although he attempted to swerve at the last second, Clark could not avoid striking Bauer with the left front of his vehicle. Bauer was taken to St. Joseph Mercy Hospital by Superior Ambulance. Both driver and pedestrian are from Ann Arbor.

On Aug. 1 at 12:30 p.m. in Sharon township, John A. Harrison of Clinton and his passenger, Carl J. Woodward, also of Clinton, were driving south on M-52 near Pleasant Lake Rd. Harrison stated there was an object in the roadway which he swerved to miss on the right-hand side as there was a vehicle coming toward him he didn't want to hit. Harrison's car ran off the side of the road into a ditch throwing Woodward

out of the passenger's side of the vehicle. The injured passenger was taken to Chelsea Medicenter.

Also on Aug. 1, at 11:45 p.m., in Lima township, Dewey G. Harris of Detroit, lost control of his vehicle while driving east on I-94, near Fletcher Rd. Harris stated he thought he saw something in the roadway and when he hit the brakes his vehicle went out of control and rolled over. The injured driver was taken to St. Joseph Mercy Hospital by Superior Ambulance.

At the scene of Dewey Harris' accident, William A. Fuqua of Detroit, lost control of his vehicle a few minutes later, skidding into the car of Donald J. Stratton of Mt. Prospect, Ill., who was parked off the roadway assisting subjects injured in the previous accident.

On Aug. 2 at 3 p.m. in Sylvan township, James A. Kirk of 208 E. Middle, skidded in an attempt to avoid hitting an animal that ran in the way of the Honda 175 motorcycle he was driving on Kilmer Rd. near Kalmbach. Kirk was taken to St. Joseph Mercy Hospital where he is recovering from a broken knee.

Also on Aug. 2, at 3 a.m., in Lyndon township, on North Territorial, near Island Lake Rd., Donald Heck of Michigan Center, reached down to get his cigarette lighter which had dropped on the floor, causing him to lose control of his vehicle and fall to stop in assured distance.

On Aug. 2 at 5:24 p.m. in front of 13436 North Lake Dr., in Dexter township, Mescole F. Davis of Ann Arbor drowned.

FLOWER LAND
Ponce de Leon named Florida after the beautiful wildflowers growing there in abundance.

WAKE UP!
GET YOUR APPLICATION
Washtenaw
Community
College
Apply Now!

Dana Corp. Little Leaguers Face All-Stars Team Tonight

Dana Corp. is the champion team in the Little League this season with an almost perfect 7-1 record. Tonight, Aug. 6, they will take on the All-Stars, a team composed of four players from every other team.

Dana, coached by Hank Orbring, combined good pitching and outstanding hitting to run away with the league title. The All-Stars will be coached by George Heydlauff, Gary Cattell, Bob Kelly and Tom Morrison who all did a fine job coaching Little League teams this year.

Dana suffered its only defeat on July 27 at the hands of Frigid Products who upset them 8 to 6 in a well-fought hitting contest.

Undaunted by the previous night's defeat, Dana bounced back to blitz the Palmer T-Birds, 18-0, on July 28. Mike Fouty and "Moose" Murphy were credited with the shut-out which sent Dana on its way to three consecutive victories. If the T-Birds had been able to rout Dana in this game, they could have tied Dana for the championship instead of ending up in second place with a 6-2 record for the season.

Dana Corp.'s next two wins came on Aug. 3 when they defeated the Chelsea Jaycees, 12-6, and then on Aug. 4 when they downed Murphy's Barber Shop, 13-5, to wrap up the championship spot for themselves.

Against the Jaycees, Dana's Moose Murphy was the hitting star with a double, a triple and a home-run. Mike Fouty, the winning pitcher, also smashed a four-bagger. In their final game, Dana's Gary Wellnitz outpitched Murphy's Barber Shop pitcher, Kevin Kelly, in a good game. Murphy's Barber Shop earlier had won two consecutive games to give themselves a third place

4-4 standing in the league. The first victory came on July 27 when they defeated the Chelsea Jaycees by a score of 7 to 1. Murphy's came up with some good pitching as Kevin Kelly and John Daniels held the Jaycees to only two hits. Jeff Weber and Jamie Boyer led the Murphy hitting attack.

On July 28, Murphy's Barber Shop routed Frigid Products, 14-6. John Elliott smacked a triple for Murphy's Barber Shop, and Matt Heydlauff brought in two runs for Frigid Products with his triple.

Frigid Products did manage a victory at their next game on July 30 when they outman the Jaycees by a score of 4-3. It was probably the best showing of the season for the unlucky Jaycees who ended up in last place with an 0-8 record.

The Palmer T-Birds won three consecutive games on July 30, Aug. 3 and Aug. 4. They defeated Murphy's Barber Shop, 10-2, with a big rally in the second inning when the T-Birds brought in seven runs with the help of errors by their opponents. Dave Alber was the winner's leading hitter, and Brian McGibney was the pitcher for the victorious T-Birds.

In a well-played game for both sides, the Palmer T-Birds defeated Frigid Products, 8-6, on Aug. 3. This kept the T-Birds in contention for first place, but put Frigid Products in fourth place with a 3-5 record for the season.

Although the T-Birds won their last game on Aug. 4 against the Jaycees, they still couldn't surpass Dana Corp. who had also been victorious that evening. Palmer T-Birds routed the Jaycees, 16-3, in that last game with Mark Burnett leading the T-Birds in hitting by collecting three hits, including a grand-slam home-run. Dave Schaible and Jeff Sweet also hit well for the T-Birds. Both Dave Alber and Don Morrison pitched well for the T-Birds. Mike Kozminski led the Jaycees in a losing battle to gain at least one win for his team.

G. A. Sales Leads T-Ball League at 6-1

G. A. Sales & Service marched on toward first place by solidly winning their last three games in succession in T-Ball League play. They first defeated Chelsea State Bank on July 27 with a 16-3 victory. Steve Dresch belted a four-bagger and Mike Blase hit a triple for the winners. In spite of Brian Kalish's three home runs, Chelsea State Bank still went down to their first of three consecutive defeats.

G. A. Sales' next game on July 30 resulted in a 22-10 victory over Spaulding Chevrolet. Still going strong, G. A. Sales' next triumphed Chelsea State Bank, 48-10, in their game Aug. 3. The high score was boosted by the mighty bat of Steve Dresch which produced three home runs for G. A. Sales. With this victory, G. A. Sales earned a 6-1 standing to lead the T-Ball League. Their final match will be tonight, Aug. 6 when they will meet Spaulding Chevrolet at the high school.

In other games, Spaulding Chevrolet routed Chelsea State Bank on July 28 by 37-6 with Doug Bowen supplying six hits for the winners. Spaulding then went on to smash Chelsea State Bank, 58 to 10, in their final meeting Aug. 4. Gary Ringe and Mike Wood each slugged seven hits for their winning team.

The high score set a new record for T-Ball play. It also gave Spaulding Chevrolet second place so far in T-Ball standings with a 3-4 record. Chelsea State Bank is third out of three teams with two wins and six losses.

The recently-created "Northern Line," consisting of the Northern Pacific and the Great Northern railways, has 25,000 miles of tracks running into 18 states.

Blaess Elevator, Burgett Capture Softball Crowns

Behind Bill Pidd's superior pitching, the Blaess-Elevator team captured the fast-pitch softball championship. Dana was the only team to defeat the hard-hitting Blaess players.

Pidd was untouchable when he hurled his first no-hitter a week ago.

Other teams finished in this order: The Pub, second; Dana, third; Wonderland Lumber, fourth; Zion Church, fifth; Grohner & Dunlavy, sixth; and A & W from Dexter, seventh.

R. O. Burgett ran away with the slow-pitch softball league, going undefeated. The rest of the league finished in the following order: Gambles, Independents, St. Paul Church, Chelsea Lumber.



MAUSOLEUMS * MONUMENTS
BRONZE TABLETS * MARKERS

**BECKER
MEMORIALS**
6033 Jackson Road
ANN ARBOR, MICHIGAN

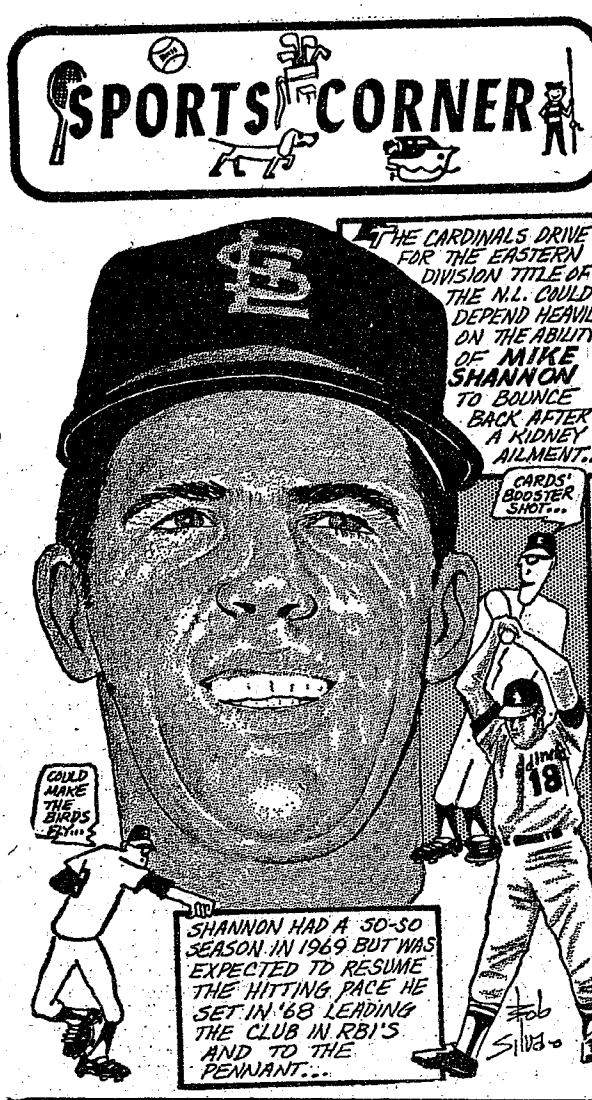
BOWL for the fun of it...



**Having Fun Lately?
Bowling Is a Ball!**

Put some fun in your life . . . Bowl for laughter and health at our modern, well-equipped lanes with rarely a wait. Bring the gang down!

CHELSEA LANES
1180 M-52 Phone GR 5-8141



SHANNON HAD A 50-50 SEASON IN 1969 BUT WAS EXPECTED TO RESUME THE HITTING PACE HE SET IN '68 LEADING THE CLUB IN RBI'S AND TO THE PENNANT...

THE CARDINALS DRIVE FOR THE EASTERN DIVISION TITLE OF THE N.L. COULD DEPEND HEAVILY ON THE ABILITY OF MIKE SHANNON TO BOUNCE BACK AFTER A KIDNEY ILLNESS...

CARD BOOSTER SAYS...

WILD MIKE THE SHIPS...

SHANNON HAD A 50-50 SEASON IN 1969 BUT WAS EXPECTED TO RESUME THE HITTING PACE HE SET IN '68 LEADING THE CLUB IN RBI'S AND TO THE PENNANT...

SHANNON HAD A 50-50 SEASON IN 1969 BUT WAS EXPECTED TO RESUME THE HITTING PACE HE SET IN '68 LEADING THE CLUB IN RBI'S AND TO THE PENNANT...

SHANNON HAD A 50-50 SEASON IN 1969 BUT WAS EXPECTED TO RESUME THE HITTING PACE HE SET IN '68 LEADING THE CLUB IN RBI'S AND TO THE PENNANT...

SHANNON HAD A 50-50 SEASON IN 1969 BUT WAS EXPECTED TO RESUME THE HITTING PACE HE SET IN '68 LEADING THE CLUB IN RBI'S AND TO THE PENNANT...

SHANNON HAD A 50-50 SEASON IN 1969 BUT WAS EXPECTED TO RESUME THE HITTING PACE HE SET IN '68 LEADING THE CLUB IN RBI'S AND TO THE PENNANT...

SHANNON HAD A 50-50 SEASON IN 1969 BUT WAS EXPECTED TO RESUME THE HITTING PACE HE SET IN '68 LEADING THE CLUB IN RBI'S AND TO THE PENNANT...

SHANNON HAD A 50-50 SEASON IN 1969 BUT WAS EXPECTED TO RESUME THE HITTING PACE HE SET IN '68 LEADING THE CLUB IN RBI'S AND TO THE PENNANT...

SHANNON HAD A 50-50 SEASON IN 1969 BUT WAS EXPECTED TO RESUME THE HITTING PACE HE SET IN '68 LEADING THE CLUB IN RBI'S AND TO THE PENNANT...

HELLER ELECTRIC & INSULATING
Licensed Electrical Contractor
ALL TYPES OF WIRING
THERMTRON INSULATION
Call After 5 p.m.
475-7978
20640 Sager Rd., Chelsea

LAWN CARE
LAWN MOWING - POWER RAKING
HEDGE TRIMMING - FERTILIZING
SNOW REMOVAL
FIREPLACE WOOD - TREE REMOVAL
FOUR SEASONS LAND CARE
BRIAN FARGHER PHONE 475-2457

TOYS! TOYS! TOYS!
WANTED:
HOUSEWIVES - MOTHERS
BE A TOY DEALER
Good commission, extra bonus gifts!
NO EXPERIENCE OR CASH INVESTMENT NEEDED!
No delivery or collecting!
Sell Now to Dec.
PHONE (517) 784-2037 - HELEN LITTLE
1306 Winston Dr., Jackson, Mich. 49203
PLAYHOUSE TOY CO., Inc.

**HELP
STAMP OUT**



**DRIVING
WORRIES**

Join **AAA** Today

For Information Call...

RAY JOHNSTON

Phone 665-7701

1200 S. Main St. Ann Arbor

Fall Term



Stephen Fairbanks
Registrar

Starts
September 8

Not Too Late
To Enroll

Many Benefits: (a) Furnished Dormitory Apartments (b) Employment Placement (c) Financial Aid —Student Loans—Part-Time Work (d) No Previous Business Education Required.

CLASSES OFFERED FOR TOP POSITIONS:

- ★ Accounting Management
- ★ Business Management
- ★ Data Processing Management
- ★ Office Accounting
- ★ Executive Secretarial
- ★ Legal Secretarial
- ★ Medical Secretarial
- ★ Secretarial

REQUEST FREE CATALOG. VISIT OUR COLLEGE.

Telephone 789-6123 for more information.

**Jackson
Business University**

234 So. Macphig St. Jackson, Mich.

If you're looking
for the big car buys
of the year...

"See your
Chrysler
Dealin' Man"



Chrysler Newport

Big inside. No other American production car has more interior room. Big on power. A 383 cubic inch V-8 that runs on regular gas is standard. Big on engineering. Torsion-Quiet Ride blends torsion-bar suspension, unibody construction and a new Sound Isolation System for performance combined with silence. All this. Yet Newport is priced just a few dollars a month more than the most popular smaller cars comparably equipped. See your Chrysler Dealin' Man during final clearance. You'll find he can put you behind the wheel of a big, luxurious Chrysler for a lot less than you think.

AUTHORIZED DEALERS **CHRYSLER**
MOTORS CORPORATION

CIDAA

G. A. SALES & SERVICE • 1185 Manchester Road



WASHING CARS at Jiffy Market, corner of Sibley and Werkner Rds., brought fun and profits to the youth of St. Thomas and Our Savior Lutheran churches. Included in the participants of the Saturday, Aug. 1, fund-raiser were Pastor Daniel

Mattson, David Layher, Jeff Layher, Diane Ruhlig, Carl Schneider, Ron Keil and Ron Herrst all of Our Savior, and the Rev. William Keller, Aletha Haab and Danny Houk of St. Thomas. Nice weather helped business, which was described as very good.

Marcia Kelly Attends Orientation at CMU

Marcia C. Kelly, daughter of Mr. and Mrs. Robert W. Kelly, 501 Maywood, was among the more than 250 prospective Central Michigan University freshmen to attend freshmen orientation activities during the July 28-29 orientation period.

Another 250 students came on campus for orientation procedures July 30-31. In all, Central Michigan University, Mt. Pleasant, will accommodate more than 3,000 new freshmen at summer orientation sessions prior to regular CMU registration Aug. 25-28.

Mrs. Ben Donaldson on Month-Long Churchmen's Asia-World Study Tour

Mrs. Ben Donaldson has joined the Churchmen's Asia-World Study Tour. This round-the-world tour is sponsored by the Division of World Peace of the United Methodist Church. Its primary purpose is to study the future of the United States and Chinese roles in Asian and world affairs. She left July 27 from Metro Airport for Tokyo and will return Aug. 28.

The tour will take in many of the countries on the periphery of the Peoples Republic of China including the island of Taiwan ruled

by the Nationalist Chinese government. Also included are Hong Kong, Japan, Saigon, India, Beirut, Jerusalem and London.

Unusual features of the tour will include a visit to the Expo '70 in Osaka; participation in the 25th anniversary ceremonies of the dropping of the bomb on Hiroshima; a visit to the Taj Mahal by full moon; and visits to Lebanon and Israel, the key countries in the present Middle East crisis.

The visit to Saigon will provide a chance to talk with persons from a wide spectrum of Vietnamese life as well as with a variety of informed Americans.

The tour is under the leadership of Dr. Herman Will, Jr., Associate General Secretary, Board of Christian Social Concerns of the United Methodist Church. Dr. Will is a specialist on international relationships.

GOOSO Carpet Cleaning

August is a vacation month, but if carpet cleaning is one of the jobs to be done, we have a suggestion. We recommend GOOSO, the new method of cleaning carpets without water. The carpet is dry and ready to walk on immediately. Use our Hot Electric Up-Brush. It's easy. Clean 40 sq. yds. only \$9.95. Phone for information.

Merkel Bros.
Phone 475-8621

TEACHER TOPICS

In response to many inquiries from the community regarding education in the Chelsea schools and a contract settlement, the Chelsea Education Association (CEA) will make available information through this new column.

The Chelsea Board of Education and the CEA are now trying to reach a settlement on re-opened items in the present contract.

Reaching agreement on a new contract or on re-opened parts of a multi-year pact involves the complex collective bargaining process. Collective bargaining is primarily made up of three steps: NEGOTIATION, MEDIATION, and FACT-FINDING. In some cases, compulsory arbitration is added.

NEGOTIATION, the first step, is a series of give and take meetings. Here each side bargains for attractive terms of employment. Often parties cannot reach agreement on several issues. When such lack of movement occurs, either side may request a state labor mediator.

MEDIATION begins when the Michigan Employment Relations Commission (MERC) sends a mediator to the school district. The mediator's job is to draw a compromise solution from the dispute. He does so by separating the parties and carrying proposals, counter-proposals, and his own suggestions between the sides.

In the Chelsea school's situation, a mediator was requested by the CEA on June 27. Leo Cadwell, mediator from the Detroit MERC office, began mediation on Tuesday, July 21, at 2:30 p.m.

In this first meeting, held at the high school, Cadwell heard the areas of differences before adjourning the parties to separate rooms. In the discussions which followed, each side explained its position to Cadwell. After the second meeting was set for the following Tuesday at 7 p.m., this initial session ended.

By July 28, Cadwell had studied the case and the parties met in attempts to reach agreement through the mediator. In this five-hour session, many issues were discussed, but the major economic points remained outstanding. Both sides indicated that fact-finding should be entered into, and on July 29, the CEA filed with MERC for the appointment of a fact-finder.

FACT-FINDING It will be the role of the fact-finder to call for a public hearing in our school district. At this public hearing, each side will present evidence, witnesses, and arguments to support its position on the unresolved issues. After hearing the case, which may take several meetings, the fact-finder leaves to study the case.

Within 30 days, the fact-finder must present each party with a report proposing a workable solution to the dispute. It is a solution which both sides should be able to accept. If the fact-finder feels that a settlement might be reached before issuing a report, he may take on the role of a mediator before completing fact-finding.

BINDING ARBITRATION. As mentioned earlier, compulsory or binding arbitration may also be used to end the dispute. In this process, unresolved issues are presented to an arbitrator who hears both sides in the same manner as a fact-finder. The difference between binding arbitration and fact-finding is that the arbitrator's decision is final and must be accepted by both parties.

The CEA requested, at the July 13 School Board meeting, that two unresolved grievances be submitted to an arbitrator. The School

Board has not formally answered the Association's request for binding arbitration. It should be noted that binding arbitration is the final step in solving most grievances under terms of the present contract. One of the two grievances, waiting to be heard by an arbitrator, is in regards to John Schaffner's position as head basketball coach.

Jackson County Fair Opens Sunday, Aug. 9

With less than one week remaining before opening day, the Jackson County Fairgrounds are a center of organized activity, with workmen busy putting the finishing touches on the display buildings, checking electrical connections, erecting directional signs and clearing the grounds for the many rides and games which will arrive later in the week.

These work crews have been hard at work for weeks to be sure that each harmoniously colored building, the 20,000 flowers, the fountains and waterfalls, the children's barnyard, the roadside park and the 1890 Main Street are ready to greet you and your family when you visit the fair.

At the same time, in hundreds of homes throughout the surrounding community there are men, women, and children working equally hard preparing their displays and exhibits or making final last minute plans for the operation of the many eating areas manned by various civic and church groups. Because that's what a county fair really is, a giant community get-together.

So, as you can see, Michigan's most beautiful fair is readying itself to welcome the thousands of visitors who will come through its gates Aug. 9 through Aug. 15, and with many new and innovative improvements for the convenience of the fairgoer, and the always well maintained and clean grounds, everyone will go home saying what visitors to the fair have been saying for years. The Jackson County Fair, "It's something else."

Subscribe today to The Standard!



ENGAGED: Mrs. Roma Salyer, 227 Jefferson St., announces the engagement of her daughter, Wanda L. Salyer, to Donald A. Koenigster, son of Mr. and Mrs. Loren Koenigster of 3015 Fletcher Rd. Both Wanda and Donald graduated from Chelsea High School in 1968. Wanda attended Washtenaw College and is now employed at the Chelsea post office. Donald works part-time at Power Technology, Ann Arbor, while attending Eastern Michigan University. No date has been set as yet for the wedding.

School Will Be Buying Used Books Instead of Selling This Year

Instead of selling books this year, the high school will be purchasing used books from students. The book store will be open on Aug. 18, 19, 20 and the school will pay cash for good, useable textbooks. There should be no writing of any kind in the books, and those with loose pages or covers will not be acceptable.

The following books will be new this year, and cannot be sold to the school: Government; French I and French II; Algebra II; General Biology; Chemistry.

Watch The Standard next week for price announcements.

Industrial use of electricity, called the most refined and ready-to-use source of energy today, normally accounts for about half of all of the electricity sold by the Detroit Edison Co.

Senior Citizens Plan August Birthday Party

Chelsea Senior Citizens at the monthly business meeting Tuesday evening, July 29, made arrangements for the August social meeting Thursday, Aug. 6, at 7:30 p.m. at the Korner House. Mr. and Mrs. Donovan Sweeney will host the evening's activities.

The August birthday party, with a 6:30 p.m. pot-luck dinner, also at the Korner House, will be held Aug. 20. Announced as the committee in charge were Mr. and Mrs. Wilbert Breitenwischer and Mrs. Lydia Bohnet.

Nineteen members were present for the business meeting. Mrs. Mary Kniss, vice-president, presided.

Vacation in Honolulu

Mrs. Floyd Gentner, 316 Jackson St., returned home Sunday, after spending a week in Honolulu, Ha., as the guest of her son, Huaner Gentner and his family, of Hanover Park, Ill., who accompanied her on the trip. Wednesday night, July 29, which is Mrs. Gentner's birthday, they had dinner at the LaRonde Revolving Satellite Restaurant on top of a 23 floor building. As a special treat, her granddaughter, Lisa, accompanied the orchestra of Peirson Thall on the tambourine in several musical numbers. It was a vacation that will always be remembered, Mrs. Gentner states.

Tired of curtains? Designer shutters which may be antiqued, varnished or stained to complement any room offer an effective option. With spray paint, an endless variety of colors are at your fingertips. Antiquing offers a novel touch. Stains or varnish can bring out the warmth of wood to accent any room.



APRIL WEDDING: Mr. and Mrs. Edward Orlovski, 570 Chandler St., announce the engagement of their daughter, Marcyne, to Gregory O'Neil Hardy, son of Mr. and Mrs. William Hardy of Columbus, O. Marcyne graduated in 1969 from Chelsea High School and in 1970 from Elkhart Institute of Technology, Elkhart, Ind. She is presently employed with Dr. Noel Campbell in Dixboro. Gregory graduated in 1967 from St. Francis DeSales High School in Columbus. He is employed with the A & P in Columbus. The couple plans an April wedding.

The bird world will be represented at the 1970 Michigan State Fair, with prize pigeons, chickens, ducks, and geese on display. The fair runs from Aug. 28 through Sept. 7.

IMPROVE YOUR HOME

Local Company — With Service

- ★ Aluminum Siding
- ★ Roofing
- ★ Patio Covers
- ★ Enclosures
- ★ Awnings
- ★ Replacement Windows
- ★ Eaves Troughs
- ★ Storm Windows
- ★ Storm Doors
- ★ Trailer Skirting
- ★ Insulation

GEORGE MEYER COMPANY

3496 Pontiac Rd., Ann Arbor. Telephone 769-7330
EXTERIOR HOME IMPROVEMENTS

George Meyer — Bob Behnke

Merkel Bros.
Phone 475-8621

IF YOUR MONEY ISN'T EARNING THE BEST AVAILABLE INTEREST RATES... YOU CAN NOW EARN UP TO

6% ANNUAL RATE
plus
daily interest

With ANN ARBOR FEDERAL SAVINGS

Do it by mail today. Just send this coupon and we'll send complete details or send your check and your account will be opened immediately.

Your account is safely insured to \$20,000 with F.S.L.I.C. No depositor has ever lost one penny with Ann Arbor Federal Savings. Total assets are over 127 million dollars.

For answers to any questions, now or later, call Mr. Wild, (313) 863-7655 Collect.

- 5% PASSBOOK SAVINGS ACCOUNTS Effective annual interest 5.09%. Deposit any amount.
- 5 1/4% PASSBOOK CERTIFICATE ACCOUNTS. Six months maturity in amounts of \$1000 or more. Effective annual interest rate is 5.35%.
- 5 3/4% PASSBOOK CERTIFICATE ACCOUNTS. One year maturity in amounts of \$5000 or more. Effective annual interest is 5.87%.
- 6% PASSBOOK CERTIFICATE ACCOUNTS. Two year minimum maturity in amounts of \$5000 or more. Effective annual interest rate is 6.13%.

ALL ACCOUNTS INSURED TO \$20,000 BY F.S.L.I.C.

ANN ARBOR FEDERAL SAVINGS

401 E. Liberty, Ann Arbor, Michigan

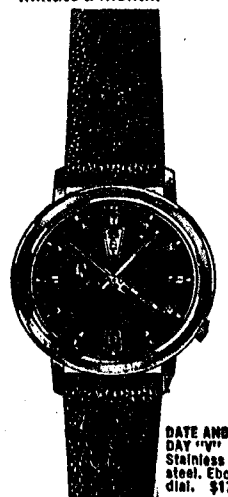
Name _____
Address _____
City _____ Zip _____

- () Send full details
- () Start my 5% Passbook Savings Account with \$_____ enclosed
- () Send _____% Passbook Certificate for \$_____ enclosed

Accutron® by Bulova

the most accurate watch in the world

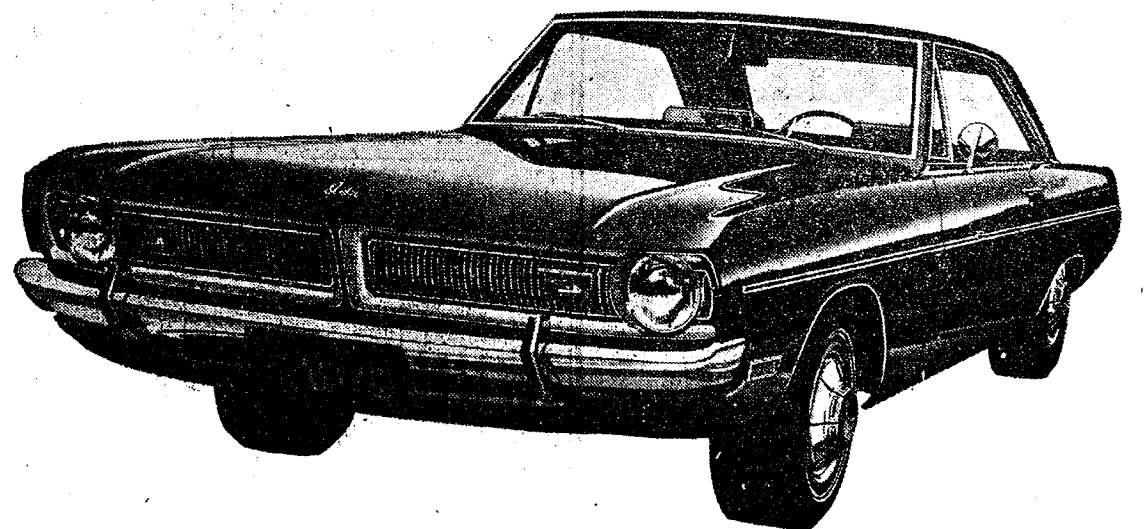
The heart of an Accutron watch is a tiny, electronically-powered tuning fork that splits a second into 360 equal parts. This split-second timing is so precise that Bulova guarantees accuracy to within a minute a month.*



WINANS JEWELRY

*We will adjust to this tolerance, if necessary. Guarantee is for one year.

GREAT CHELSEA BUYS



DODGE DART LEADS THE WAY TO TOP SAVINGS

For years, Dodge Dart has been America's biggest compact value. That's because it seats six, is so strong and economical, and has exceptionally high resale value. Right now, you get the lowest price of the year on this roomy compact because we've got to clear out all our 1970

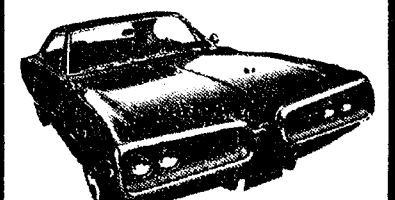
models. So come in and get the year's biggest savings during our summer clearance.

DODGE POLARA



More room, luxury, savings.

DODGE CORONET



Big model selection of the car that's very big for its price.

Ya!! hurry in for these Summer Savings.

G. A. SALES & SERVICE, INC.

1185 Manchester Road

Chelsea, Michigan





Mr. and Mrs. Charles Sprawka

Kathryn Hogan, Charles Sprawka Will Make Their Home in Italy

Miss Kathryn Ann Hogan, daughter of Mr. and Mrs. William

C. Hogan, 20900 North Territorial Rd., and Charles Sprawka, son of Mr. and Mrs. John Sprawka of Detroit, were united in marriage on Friday, July 17 by the Rev. Fr. Edmund Muth at the Epiphany church in Detroit.

Maid of honor at the ceremony was Miss Jacqueline Cafferty. Serving as bridesmaids were Doreen Myrand, Nancy Roda, Linda Lemieux, Mary Kelly, and Bernadette Sprawka, sister of the bridegroom.

Best man was Gregory Sprawka, brother of the bridegroom, and ushers included David Brooks, Paul Litzinski, Jerry Zonca, Michael Saura, and Robert Michal.

After the ceremony, the guests attended a reception at the Gourmet House, Westland. The couple departed July 23 to make their home in Vicenza, Italy, where the bridegroom is stationed in the Engineering Corps of the U.S. Armed Services.

All entertainment will be free to those attending the 1970 Michigan State Fair Aug. 28-Sept. 7 at the Fairgrounds in Detroit.

Rhonda Romine, John K. Pickard Wed Saturday

Miss Rhonda Romine, daughter of Mr. and Mrs. Raymond Canine, 541 N. Main St., and John Keith Pickard, son of Mr. and Mrs. Elwood K. Pickard of Pompano Beach, Fla., were married in the Methodist church Saturday, Aug. 1, by the Rev. Clive Dickins.

The bride chose a blue and white sheath for the occasion. Mrs. Canine chose a blue and white dress and accessories for the wedding and wore a pink tinted corsage. Mrs. Pickard's corsage was tinted orange to match her formal design dress, beige overcoat and accessories.

Pam Bailey of Chelsea was maid of honor and Jack Parks of Ann Arbor was best man.

A reception followed the wedding in the social center of the church. Approximately 50 relatives from Michigan and Florida attended. Mrs. Marilyn Salyer and Mrs. Adams hosted the reception. Barbara Lemaster, Karen Romine, sister of the bride, Pam Bailey, Shelly Rocker of Orlando, Fla., and Nancy Dyson of Chelsea assisted with the cake, coffee, punch and ice cream.

After a honeymoon in Orlando, Fla., the couple will reside in Pompano Beach, Fla.

Homemaking Hints

If you're planning a backyard patio for outdoor relaxation and informal entertaining, include a sink with hot and cold water and drinking fountain. They will make entertaining and cleanup easier. The fountain will keep children from running in and out of the kitchen all day for drinks of water.

Club and Social Activities

PAST PRESIDENTS CLUB

Past Presidents Club of the American Legion Auxiliary was entertained at the home of Mrs. William Weber of Crooked Lake with dinner followed by a business meeting.

Plans were made for the installation of the officers of the American Legion Auxiliary. Congratulations were sent to Dr. and Mrs. Brock in Florida for their soon-to-be celebrated golden wedding anniversary. Congratulations also went to Mr. and Mrs. Edwin Eaton of Chelsea who recently celebrated their golden wedding anniversary.

Entertainment for the evening was card playing in which prizes were won by Mrs. Lyle Christwell, Sr., Mrs. Erma Mayer, and Mrs. Roy Miller.

The next meeting will be held Sept. 29 at 7:30 p.m. at the home of Mrs. Luther Hale at Cavanaugh Lake.

BURKHART REUNION

Descendants of Mr. and Mrs. Charles Burkhardt, pioneer residents of the North Lake area and grandparents of Mrs. Elmer Winans, met Sunday, Aug. 2 at Pierce Park for their annual reunion. Members of the family were present from Hart, Detroit, Shelby, Perry and Laingsburg. Also present were members of another branch of the family from Howell.

Following a pot-luck dinner, Auburn Burkhardt of Perry was named president and Mrs. Richard Whitmeyer of Laingsburg was designated secretary-treasurer. They will be in charge of arrangements for the next reunion, the first Sunday in August, 1971, which is to be held at the home of Mr. and Mrs. Newell Gale at Stony Lake, near Hart.

There were 35 present for Sunday's get-together here.

District Court Proceedings

In the 14th District Court this past week, Philip Jeffrey, of Manchester, pled guilty to failing to stop for a stop sign, paying \$15 fine and costs.

James Fish, 3451 Walworth, pled guilty to speeding 49 mph in a 35 mph zone, forfeiting his \$25 bond for the fine and costs.

Daniel Ganshorn, of Manchester, pled guilty to failing to stop for a stop sign, paying \$15 fine and costs.

Merlin Wallen, of Saline, pled guilty to excessively noisy tires, paying \$15 fine and costs.

John Cramer, of Brooklyn, pled guilty to speeding 45 mph in a 25 mph zone, paying \$30 fine and costs.

Willard Charles Kohler, Clinton, pled guilty to speeding 60 mph in a 35 mph zone, paying \$40 fine and costs.

David Earl Joslin, of Manchester, pled guilty to defective brakes, paying \$15 fine and costs.

Oleg Smith, of Gregory, pled guilty to failing to stop for a stop sign, paying \$15 fine and costs.

David Stuckman, of Kalkaska, pled guilty to speeding 70 mph in a 55 mph zone, paying \$20 fine and costs.

John A. Thoss, of Saline, pled guilty to speeding 46 mph in a 35 mph zone, paying \$20 fine and costs.

Gerald Roslin, of Ypsilanti, pled guilty to speeding 75 mph in a 55 mph zone, paying \$20 fine and costs.

Roger Mulholland, of Jackson, pled guilty to speeding, paying \$20 fine and costs.

Earl McIntosh, of Plymouth, pled guilty to failing to stop in an assured clear distance ahead, paying \$15 fine and costs.

Dwaine Snay, of Dexter, pled guilty to careless driving paying \$35 fine and costs.

George Vansiver, of Pinckney, pled guilty to making an improper turn, paying \$15 fine and costs.

Helen J. Steiner, of Ann Arbor, pled guilty to speeding 40 mph in a 25 mph zone, paying \$20 fine and costs.

Harold Whiteford, of Dexter, pled guilty to speeding 45 mph in a 25 mph zone, paying \$30 fine and costs.

Arthur Robinett, of Ypsilanti, pled guilty to speeding 35 mph in a 25 mph zone, paying \$20 fine and costs.

Michael Cole, of South Lyon, pled guilty to careless driving, paying \$35 fine and costs.

James Davis, of Whitmore Lake, pled guilty to being a minor in possession of intoxicants paying \$35 fine and costs.

Jack Brainard, of Whitmore Lake, pled guilty to speeding 100 mph in a 70 mph zone, paying \$50 fine and costs.

Junior Lee Smith, of Brighton, pled guilty to speeding 50 mph in a 25 mph zone, paying \$40 fine and costs.

Jeanette Newcomb, 164 S. Main, pled guilty to speeding 80 mph in a 45 mph zone, paying \$60 fine and costs.

David McGinnis, of Saline, pled guilty to speeding 90 mph in a 70 mph zone, paying \$30 fine and costs.

John Phillips, of Marlette, pled guilty to careless driving, paying \$35 fine and costs or four days, and to not having an operator's license on his person, paying \$15 fine and costs or one day.

David E. Schaefer, of Ann Arbor, pled guilty to passing in a no-passing zone, paying \$20 fine and costs.

Casmier S. Pawlowski, of Southgate, pled guilty to speeding 55 mph in a 35 mph zone, paying \$30 fine and costs.

Donald Moore, of Detroit, pled guilty to driving on a revoked license, paying \$50 fine and costs and either three days in jail or five days on the Saline Work Program during his 30 days probation.

David W. Kivi, of Saline, pled guilty to illegal passing, paying \$25 fine and costs.

George Kline, of Dexter, pled guilty to driving while under the influence of liquor, paying \$100 fine and costs or 10 days and giving his driver's license to the court.

Rudy Haas, of Dexter, pled guilty to speeding, paying \$26 fine and costs.

James F. Richardson, of Ann Arbor, pled guilty to drunk and disorderly, paying \$50 fine and costs or five days.

WORLD SCANNER

Spacetrack is a world-wide system of radar and space cameras operated by the Aerospace Defense Command. More than 400 Aerospace Defense Command units are stationed throughout the United States as well as Iceland, Canada, and Greenland.



Mrs. Gregory Arlin Stephens

Gail Machnik, Gregory Stephens Speak Vows at Methodist Church

Miss Gail Ann Machnik, daughter of Mr. and Mrs. Arthur Dale Machnik, 1231 Machnik, and Gregory Arlin Stephens, son of Mr. and Mrs. Melvin Rodney Stephens, 12999 Old US-12, were married in the First Methodist church Saturday night, Aug. 1 at 7 p.m. by the Rev. George Nevlin.

The bride chose a full-length, empire waist taffeta gown with white lace bodice and sleeves and daisy trim. She carried a colonial bouquet of white roses, white daisies, light blue stephanotis with flowing light blue ribbons.

Matron of honor was Mrs. William Lounsbury of Ann Arbor in a light blue gown with white daisies accenting the empire waist. The dress flowed down in the back from the gathered waist. She carried a colonial bouquet of white daisies, sweetheart roses, light blue stephanotis and flowing light blue ribbons.

Bridesmaids included Angela Cavadas in a medium blue gown trimmed in white daisies, and Trena Bentley in a navy blue gown with white daisy trim. Both gowns were similar in style to that of the maid of honor. Bridesmaids carried bouquets of light blue daisies, light blue stephanotis and light blue flowing ribbons.

Mike Gaken of Chelsea served as best man, with Alan Machnik, brother of the bride, Ken Bentley, cousin of the bridegroom, and Gary Stephens, brother of the bridegroom, serving as ushers.

QUALITY

Wedding Stationery

Finest quality Wedding Stationery can be yours at no extra cost.

We invite you to come in and plan with us in advance of your wedding.

The Chelsea Standard

Publishers and Printers

PAT'S CORNER

BY PAT DITTMAR
Home Economist
Chelsea Milling Co.

When summer activities keep you on the go, have a cool dessert on hand for unexpected guests, or for an after-shopping treat. Brownie Wafer Torte is such a delightful dessert you'll be sure to add it to your recipe collection.

BROWNIE WAFER TORTE

(8 to 10 servings)

- 1 package "Jiffy" Pie Crust Mix
- 1 package "Jiffy" Fudge Brownie Mix
- 3 to 4 tablespoons cold water
- 1 cup chilled whipping cream
- 1 package "Jiffy" White Frosting Mix
- 1 cup flaked coconut

1. Heat oven to 425°.
2. Blend pie crust mix and brownie mix; sprinkle in water, 1 tablespoon at a time, mixing lightly until soft dough is formed.
3. Gather dough into ball and divide into 5 equal parts. Roll each into an 8-inch circle and place on ungreased baking sheet. Prick with fork.
4. Bake 4 to 6 minutes. Cool on wire racks.
5. In chilled bowl, beat cream and frosting mix until stiff. Fold in coconut.
6. On serving plate stack circles, spreading about 1/4 cup cream mixture between each layer. Frost top with remaining cream mixture.
7. Refrigerate at least 2 hours before serving.

The average family of four eats 2 1/2 tons of food in a year. Of this, nearly three-fourths of a ton are dairy products. About half a ton is meat, poultry and fish; another half ton, fruits and vegetables. The rest is made up of miscellaneous food items.

BURNOUTS ARE BLACK

Burnouts are back in fashion. A burnout is a printing process using chemicals to burn out or dissolve one fiber in a mixed fabric, resulting in a heavy and sheer design. Holes, such as eyelet, may also be burned out of a cloth.

THE STYLE SHOP

207 1/2 S. Main St.

OPEN

Tues. thru Sat.

Call 475-8400

For Appointments
Open Wed. & Thurs. Evenings

Judy Patrick
Pansy Kuhl, Rosemary Klink

COMING AUG. 9th thru 15th
"The Fair with Flower Power"
THE JACKSON CO. 55th ANNUAL

Fair

Featuring
THE GARDEN of the STARS

SUNDAY, AUG. 9
12:00 NOON - Pony Trotting Races.
8:15 P.M. - Dan Fleenor's Auto Stunt Show with Fireworks following

MONDAY, AUG. 10 KIDS DAY
All school children admitted free until 5:30 P.M.
8:00 P.M. - Swamper Soccer with Fireworks following

TUESDAY, AUG. 11
6:30 P.M. - Pony Hitches and Heavy Horse Hitches with Fireworks Following
FREE GRANDSTAND

WEDNESDAY, AUG. 12
SENIOR CITIZEN'S DAY - All Persons 65 years and over admitted free until 5:30 P.M.
7:30 and 10:00 P.M. Stars from "HEE HAW" - ROY CLARK
MARY TAYLOR-ARCHIE CAMPBELL-GRANDPA JONES
JUNIOR SAMPLES-HANK THOMPSON and his Brazos Valley Boys

THURSDAY, AUG. 13
7:30 P.M. - Live Stock Auction Bldg. No. 23 4-H Livestock - Auction Ring
7:30 and 10:00 P.M. - "OLIVER" in concert

FRIDAY, AUG. 14
7:30 and 10:00 P.M. - CHARLEY PRIDE in concert

SATURDAY, AUG. 15 KIDS DAY
10:00 A.M. - Garden Tractor Pull - 1:00 P.M. - Farm Tractor Pull
7:30 and 10:00 P.M. - PAUL REVERE and the RAIDERS featuring MARK LINDSAY

Grandstand Prices - Track Seats - \$2.50, Res. Box - \$2.50, Gen. Admission - \$1.50, children (under 12) - .50¢, under 5 free

TO PURCHASE ADVANCE TICKETS WRITE: JACKSON CO. FAIR OFFICE, 200 W. GANSON ST., JACKSON, MICH. 49201

- General Gate Admission \$1.25, children 5 - 12 .50¢, under 5 free
- Clean, paved midway • Clean Rest Rooms with Attendants (no tipping)
- Lighted auto parking .50¢, plenty of space on grounds • 1890 Main Street and Ice Cream Parlor
- Fountains, Waterfalls, over 20,000 flowers in bloom, harmoniously colored buildings
- Over \$60,000.00 in Prizes for exhibits in 21 departments.

KIDS DAY MON. AUG. 10th - SAT. AUG. 15th
ALL CHILDREN UNDER 18 FREE ADMISSION UNTIL 5:30 P.M. AND REDUCED PRICES ON ALL RIDES UNTIL 5:30 P.M.

Monthly News

August 1970

ENJOY YOUR SUMMER LIVING

There is too much good fun to be had during the summer months to let it be interrupted because of carelessness. If you will follow the good advice in this bulletin you will have a more pleasant summer.

AVOID OVEREXPOSURE TO THE SUN

A good protective cream, plus a sensible going slow at first, is the best way to avoid a sunburn. Tan slowly and safely. This year we hope you will not have to buy anything to relieve the pain of a bad sunburn. We have many good sun protection products.

DO NOT OVER-EXERT IN HOT WEATHER

Heat or sunstroke are really dangerous. Drink plenty of water especially when perspiring very heavily. This will avoid dehydration. Keep a normal diet and do not either overdress or underdress.

BEWARE OF FRECKLES AND BLOTCHES

In later years the cute freckled faced youngster is likely to become the leathery faced man and in turn this can develop into skin blotches. Blotches could be the beginning of a skin cancer and should be checked quickly if they occur.

HAVE A GOOD TIME

We hope our little message of advice helps you to a happier summer whether it be just at home or on a well-earned vacation. We carry a complete stock of vacation needs.

CHELSEA DRUG

24-HOUR PRESCRIPTION SERVICE
101 N. MAIN ST. PHONE GR 5-4611

OUR HIGHLY SKILLED and INTELLIGENT PERSONNEL

are eagerly waiting to serve you!

75-5421

VILLAGE BEAUTY SALON

Open 8:30 a.m. Tues. Thru Sat. 107 N. Main St.



MT. MCKINLEY: A postcard shows the majestic highest peak of Mt. McKinley which Don Turner tried to land on with Bush pilot Don Sheldon. Inclement weather prevented them from ever gaining access to the 20,320 ft. glacier top in the week that Turner was there.



PARK ENTRANCE: The entrance to Mt. McKinley Park is marked by this large sign where Don Turner reports that it is like a big zoo except the animals run free and the people are restricted as to where they can go. The 87-mile long road through the park, marked a welcome relief for Turner who had been travelling on the Denali Highway, whose boulders make it a challenging obstacle course.

ICE PEOPLE Within the frigid Arctic region live a million people, mostly Eskimos and reindeer herdsman of Siberia and Europe. Detroit Edison's gross plant investment rose to above the \$2 billion mark early this year, and is expected to exceed \$3 billion by 1973.

Turner Attempts Flying Visit To Mt. McKinley Glaciers

Don Turner dates his sixth letter July 19, from Paxson, Alaska. He writes:

Dear Readers: Since my last article telling about my adventure to the Pribilof Islands and the fur seals, I haven't traveled very far, but have been fighting the weather somewhat.

I left Anchorage on July 6, headed down to Palmer in the Matanuska Valley, then actually west to the small community of Talkeetna some 80 miles from Palmer. There I contacted the Talkeetna Flying Service. Don Sheldon, the owner, is a famous bush pilot.

You see, I wanted to fly to Mt. McKinley for some close-up pictures of the mountain. Mt. McKinley, the highest mountain on the North American continent, is quite a fascinating subject for many people throughout the world. Quite a number of people from different parts of the world try to climb the mountain each year and the mountain has claimed a number of lives of those who have challenged her highest summit of 20,320 feet.

Don Sheldon flies a Cessna 180 equipped with wheels and skis and lands on the glaciers at an elevation of 7,500 feet. He ferries skiers, climbers and sightseers to that altitude and supplies their base camp by landing at that level.

He agreed to take me along so I could make pictures of the snowcapped peaks and the huge glaciers as well as the climbers and skiers. But old man weather pulled a no-no. I was posed for a week ready to go at a moment's notice if the weather was right, but every day Don Sheldon and I started out in the Cessna 180 and we could go just so far and the fog, snow, and storms turned us back at the same spot. Violent wind gusts bounced the small plane around somewhat and at times it was just a bit uncomfortable as we were just a few feet above some of the lower mountain peaks and some of the down drafts seemed to drop the plane several feet, something like being in a fast elevator.

But Don Sheldon, the pilot, is one of the best in the business and knows every mountain peak in the area so I decided not to have been uneasy. On one occasion after flying several miles up the glacier to find it foggy in, we came back a different route and flew over what Don called Moose Meadows. Here I could see moose in any direction I looked. "Eight," Big fellow stood in one herd so I could photograph them all at one time as we skimmed along over them. They seemed not to be afraid of the plane and just stood looking up at us. Moose Meadows is so far removed from civilization that few hunters get in to that area which probably accounts for their great number. After a week at Talkeetna

with the rain beating down on my camper roof, I was about ready to climb the walls. So I gave up and drove around on the other side of Mt. McKinley over the Denali Highway that connects with the Richardson Highway at the village of Paxson.

The Denali Highway runs for 163 miles from Paxson to the Mt. McKinley National Park entrance and is a real rough gravel road. I think it should be renamed "The Boulder Highway" as it is made up of rocks, some the size of a car wheel with smaller rocks clunked in around the big ones and a little finer stuff spread over that. The thousands of vehicles that go over this highway each year grind up the fine stuff on top with the wind blowing it away, leaving only the rocks sticking up to a height of about six inches. This is what one bounces around over for 163 miles. The maintenance crews are doing their best to make it as smooth as possible but they don't have much they can smooth out.

Don't let me discourage anyone in driving this highway, it's not so bad if you slow down to 25 to 30 miles per hour and duck as many rocks as you can. You will make it. From the entrance of the park to the far end is 87 miles of smoother road which is maintained by the Federal Government. That probably accounts for it being in better condition.

Upon reaching the park, I found it raining as hard as on the other side and hundreds of people were in the park looking for the mountain that just wasn't there. Since May the mountain has been visible from within the park only twice, so I guess this is a bad year to see it.

I spent four days there looking for wildlife, and saw quite a bit, considering the weather. I saw several big moose herds and caribou, seven large grizzly bears, and lots of bird life. Mt. McKinley National Park is like a big zoo, only the animals run wild and the people are restricted as to where they can go. Some of the big Toklat, grizzly bears are mean and have mauled several people in recent years so you have to get special permission from the National Park Rangers to hike in the mountains. You are not allowed to carry any firearms, while in the park, and if you have had it unless you can show them. One crossed the road in front of me one day and I shot a fast Polaroid picture as he went running by. (See picture.) It was raining hard at the time so the picture didn't come out too plainly as I shot through the windshield of the camper.

At the far end of Mt. McKinley Park, in fact a mile beyond the park boundary, is a privately owned camp called Camp Denali. This camp is one I would recommend if one wants to get away from it all. It is remote, but so well situated on a high slope that you can get one of the best views of Mt. McKinley of any place I know of. Camp Denali gets its name from the nature word "denali" meaning "the high one" as they call Mt. McKinley. Camp Denali is owned and operated by Ginny Wood and Celia Hunter. (See picture.) These two ladies are real naturalists and can lead

your party anywhere you want to go in the area with the answers to anything you want to ask about the area. They seem to carry an air of the true Alaskan pioneer.

The camp is not modern and you are housed in these small cabins with no plumbing or running water, but they are comfortable. (See picture.) You carry your own water and you can rent what is known as a tent from where you can do your own cooking or you can eat your meals in the dining room where they are served family style. Good, wholesome food. There is no electricity or any motors running to remind you of civilization, no telephones, or juke boxes, only a ham radio for emergency use. So if one wants to get away from it all, I suggest you contact Camp Denali.

I had quite a chat with Ginny and Celia and they told me all about the camp and what you can expect while there. Someday I hope I can go back and spend a week or two there. The address is Camp Denali, Box D, College, Alaska.

After wandering around the park in the constant rain, I finally gave up and headed back over the Denali Highway and to my surprise I ran into a blinding snow storm at mile 68 on the highway. The ground was covered with snow and it snowed so hard I couldn't see to drive and had to stop several times. (See picture.) I am headed now for southeast Alaska and will include that in my next article.

Your wandering reporter, Don Turner.



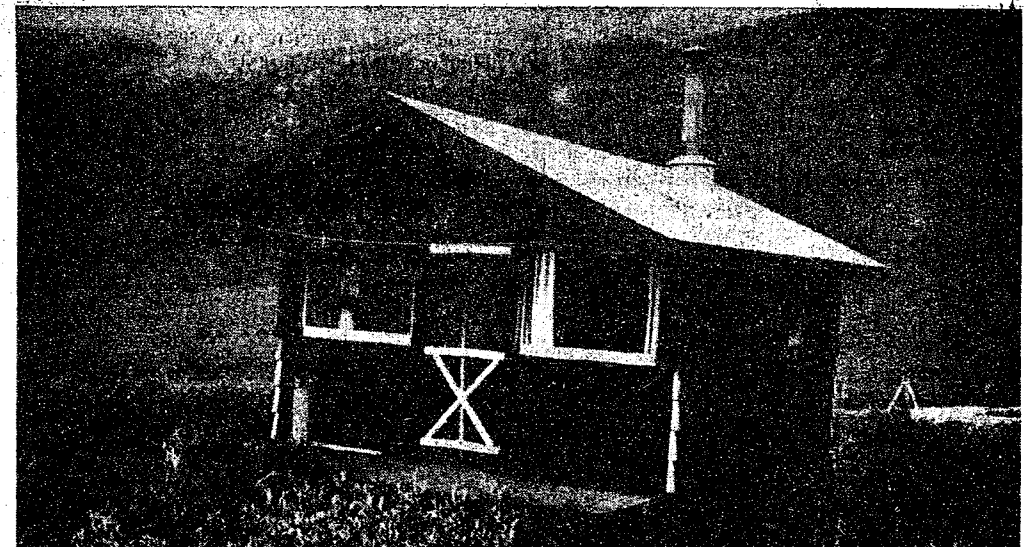
CAMP DENALI OWNERS: Ginny Wood and Celia Hunter are the owners of Camp Denali, a camp Don Turner recommends if you "just want to get away from it all." Ginny and Celia are two rugged Alaskan ladies with the air of true pioneers, according to Don Turner.



ALASKAN GRIZZLY: Don Turner is able to snap a quick shot of the dangerous Toklat grizzly bear in front of his camper at Mt. McKinley Park. The rain and general bad weather made good photography difficult.



CAMP DENALI: Don Turner's stop at Camp Denali just outside of Mt. McKinley Park, impressed him with its fine view of the mountain. He hopes to return there someday for a longer visit.



THE PRESIDENTIAL SUITE: One of the comfortable cabins at Camp Denali which lacks modern conveniences such as plumbing and running water. But Don Turner found the camp a nice escape.

CHELSEA'S 14th ANNUAL SIDEWALK DAYS

Bigger and Better Than Ever!

**FRIDAY and SATURDAY
AUGUST 14-15**

Friday - 8:30 a.m. to 9 p.m.

Saturday - 8:30 a.m. to 6 p.m.

Your budget will get plenty of extra mileage at the low bargain prices you'll find on good seasonal merchandise of every kind. Many items have been specially purchased for this big annual bargain day event.



**COME EARLY
BOTH DAYS**
and
Bring the family.
There are bargains
for everyone!

John S. Dickson Joins Navy as Part Of "Tiger Company"

John S. Dickson, son of Mr. and Mrs. Curtis F. Dickson, 623 Flanders, was among the 70 Michigan men who were sworn into the Navy on Wednesday, Aug. 6, at Tiger Stadium during ceremonies preceding the Detroit-Washington game.

Dickson, a 1968 graduate of Chelsea High school, will be part of "Tiger Company" as the Navy group will be known throughout recruit training at the Great Lakes Naval Training Center at Great Lakes, Ill.

Following the game, designated "Navy Night" by the Detroit Baseball Co., the members of the Tiger group departed by bus for the Naval Training Center.

The group was the sixth annual Tiger Company, of which two have become honor companies.

Magician Mark Wilson brings his "Magic Land of Allakazam" to the 1970 Michigan State Fair. It will be a daily Grandstand feature during the fair, which opens Aug. 28 and runs through Sept. 7 at the Fairgrounds in Detroit.

**EYES
EXAMINED
and
GLASSES
FITTED**

For Appointment
Call GR 5-5431

A. A. PALMER, M.D.
110 E. Middle St.
Chelsea, Mich.

**SEE THIS
GE FOODCENTER REFRIGERATOR FREEZER**
21.4 cu. ft. Capacity - Only 33" Wide!

SIDE-BY-SIDE

- No defrosting ever.
- Freezer holds up to 232 lbs.
- Juice can dispenser.
- Separate temperature controls for each section.
- 7-day Meat Pan.
- Slide-out drawers for vegetables, eggs, fruit, meat.
- Butter conditioner and cheese compartment.
- No unsightly, dirt-catching coils on back.
- Rolls out on wheels for easy cleaning.
- 66 1/4" high and 33" wide.
- GE Colors or White.



OPEN FRIDAY UNTIL 9 P.M. CLOSE SATURDAY AT 4 P.M.

FRIGID PRODUCTS

113 North Main St., Chelsea LLOYD R. HEYDLAUFF Phone GR 9-6651